

A16081

Leader in Biomolecular Solutions for Life Science



## CREG1 Rabbit pAb

Catalog No.: A16081

### Basic Information

**Observed MW**

24kDa

**Calculated MW**

24kDa

**Category**

Polyclonal Antibody

**Applications**

WB, ELISA

**Cross-Reactivity**

Human, Mouse, Rat

### Background

The adenovirus E1A protein both activates and represses gene expression to promote cellular proliferation and inhibit differentiation. The protein encoded by this gene antagonizes transcriptional activation and cellular transformation by E1A. This protein shares limited sequence similarity with E1A and binds both the general transcription factor TBP and the tumor suppressor pRb in vitro. This gene may contribute to the transcriptional control of cell growth and differentiation.

### Recommended Dilutions

WB 1:500 - 1:1000

### Immunogen Information

**Gene ID**

8804

**Swiss Prot**

O75629

**Immunogen**

Recombinant fusion protein containing a sequence corresponding to amino acids 110-190 of human CREG1 (NP\_003842.1).

**Synonyms**

CREG; CREG1

### Contact



[www.abclonal.com](http://www.abclonal.com)

### Product Information

**Source**

Rabbit

**Isotype**

IgG

**Purification**

Affinity purification

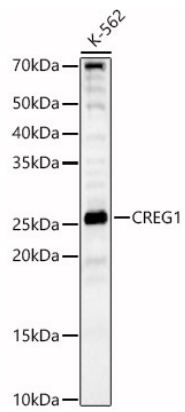
**Storage**

Store at -20°C. Avoid freeze / thaw cycles.

Buffer: PBS with 0.01% thimerosal, 50% glycerol, pH7.3.

## Validation Data

---



Western blot analysis of K-562, using CREG1 antibody (A16081) at 1:700 dilution.  
Secondary antibody: HRP Goat Anti-Rabbit IgG (H+L) (AS014) at 1:10000 dilution.  
Lysates/proteins: 25µg per lane.  
Blocking buffer: 3% nonfat dry milk in TBST.  
Detection: ECL Basic Kit (RM00020).  
Exposure time: 90s.