

A16054

Leader in Biomolecular Solutions for Life Science



## ITGA1 Rabbit pAb

Catalog No.: A16054

### Basic Information

#### Observed MW

200kDa

#### Calculated MW

131kDa

#### Category

Polyclonal Antibody

#### Applications

WB, ELISA

#### Cross-Reactivity

Mouse, Rat

### Background

This gene encodes the alpha 1 subunit of integrin receptors. This protein heterodimerizes with the beta 1 subunit to form a cell-surface receptor for collagen and laminin. The heterodimeric receptor is involved in cell-cell adhesion and may play a role in inflammation and fibrosis. The alpha 1 subunit contains an inserted (I) von Willebrand factor type I domain which is thought to be involved in collagen binding.

### Recommended Dilutions

WB 1:500 - 1:2000

### Immunogen Information

#### Gene ID

3672

#### Swiss Prot

P56199

#### Immunogen

A synthetic peptide corresponding to a sequence within amino acids 700-800 of human ITGA1 (NP\_852478.1).

#### Synonyms

VLA1; CD49a; ITGA1

### Contact



[www.abclonal.com](http://www.abclonal.com)

### Product Information

#### Source

Rabbit

#### Isotype

IgG

#### Purification

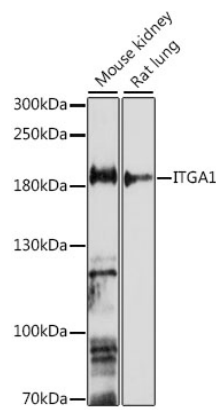
Affinity purification

#### Storage

Store at -20°C. Avoid freeze / thaw cycles.

Buffer: PBS with 0.01% thimerosal, 50% glycerol, pH 7.3.

# Validation Data



Western blot analysis of various lysates using ITGA1 Rabbit pAb (A16054) at 1:1000 dilution.  
Secondary antibody: HRP Goat Anti-Rabbit IgG (H+L) (AS014) at 1:10000 dilution.  
Lysates/proteins: 25µg per lane.  
Blocking buffer: 3% nonfat dry milk in TBST.  
Detection: ECL Enhanced Kit (RM00021).  
Exposure time: 5min.