

## CRK Rabbit pAb

<b>Catalog No.</b>	A1604	<b>Category</b>	Polyclonal Antibodies
<b>Applications</b>	WB, IHC	<b>Observed MW</b>	37kDa
<b>Cross-reactivity</b>	Human, Mouse	<b>Calculated MW</b>	22kDa/33kDa

### Immunogen Information

**Immunogen** Recombinant fusion protein containing a sequence corresponding to amino acids 1-304 of human CRK (NP\_058431.2).

**Gene ID** 1398  
**Swiss prot** P46108  
**Synonyms** CRK;CRKII;p38

### Product information

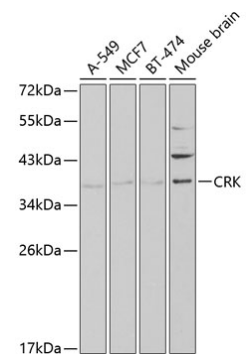
**Source** Rabbit  
**Isotype** IgG  
**Purification method** Affinity purification  
**Storage** Store at -20°C. Avoid freeze / thaw cycles.  
 Buffer: PBS with 0.02% sodium azide, 50% glycerol, pH7.3.

### Background

This gene encodes a member of an adapter protein family that binds to several tyrosine-phosphorylated proteins. The product of this gene has several SH2 and SH3 domains (src-homology domains) and is involved in several signaling pathways, recruiting cytoplasmic proteins in the vicinity of tyrosine kinase through SH2-phosphotyrosine interaction. The N-terminal SH2 domain of this protein functions as a positive regulator of transformation whereas the C-terminal SH3 domain functions as a negative regulator of transformation. Two alternative transcripts encoding different isoforms with distinct biological activity have been described.

### Recommended Dilutions

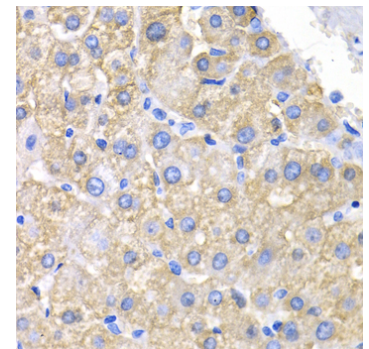
WB 1:500 - 1:2000  
 IHC 1:50 - 1:200



Western blot analysis of extracts of various cell lines, using CRK antibody (A1604) at 1:1000 dilution.

Secondary antibody: HRP Goat Anti-Rabbit IgG (H+L) (AS014) at 1:10000 dilution.

Lysates/proteins: 25ug per lane.  
 Blocking buffer: 3% nonfat dry milk in TBST.



Immunohistochemistry of paraffin-embedded human liver cancer using CRK antibody (A1604) at dilution of 1:200 (40x lens).