

A16006

Leader in Biomolecular Solutions for Life Science



Zip12 Rabbit pAb

Catalog No.: A16006

1 Publications

Basic Information

Observed MW

77kDa

Calculated MW

77kDa

Category

Polyclonal Antibody

Applications

WB, ELISA

Cross-Reactivity

Human, Mouse, Rat

Background

Zinc is an essential cofactor for hundreds of enzymes. It is involved in protein, nucleic acid, carbohydrate, and lipid metabolism, as well as in the control of gene transcription, growth, development, and differentiation. SLC39A12 belongs to a subfamily of proteins that show structural characteristics of zinc transporters (Taylor and Nicholson, 2003 [PubMed 12659941]).

Recommended Dilutions

WB 1:500 - 1:2000

Immunogen Information

Gene ID

221074

Swiss Prot

Q504Y0

Immunogen

A synthetic peptide corresponding to a sequence within amino acids 1-100 of human SLC39A12 (NP_001138667.1).

Synonyms

ZIP12; ZIP-12; LZT-Hs8; bA570F3.1; Zip12

Contact



www.abclonal.com

Product Information

Source

Rabbit

Isotype

IgG

Purification

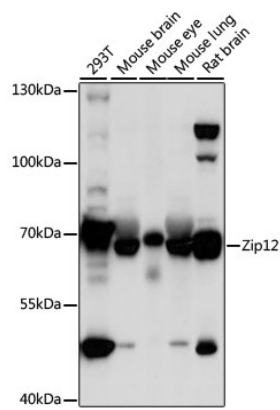
Affinity purification

Storage

Store at -20°C. Avoid freeze / thaw cycles.

Buffer: PBS with 0.01% thimerosal, 50% glycerol, pH 7.3.

Validation Data



Western blot analysis of various lysates using Zip12 Rabbit pAb (A16006) at 1:1000 dilution.
Secondary antibody: HRP Goat Anti-Rabbit IgG (H+L) (AS014) at 1:10000 dilution.
Lysates/proteins: 25µg per lane.
Blocking buffer: 3% nonfat dry milk in TBST.
Detection: ECL Basic Kit (RM00020).
Exposure time: 1s.