

A16002

Leader in Biomolecular Solutions for Life Science



## Acetyl-HMGB1-K29 Rabbit pAb

Catalog No.: A16002

6 Publications

### Basic Information

#### Observed MW

28kDa

#### Calculated MW

25kDa

#### Category

Polyclonal Antibody

#### Applications

WB,IF/ICC,ELISA

#### Cross-Reactivity

Human,Mouse,Rat

### Background

This gene encodes a protein that belongs to the High Mobility Group-box superfamily. The encoded non-histone, nuclear DNA-binding protein regulates transcription, and is involved in organization of DNA. This protein plays a role in several cellular processes, including inflammation, cell differentiation and tumor cell migration. Multiple pseudogenes of this gene have been identified. Alternative splicing results in multiple transcript variants that encode the same protein.

### Recommended Dilutions

WB 1:500 - 1:2000

IF/ICC 1:50 - 1:200

### Immunogen Information

#### Gene ID

3146

#### Swiss Prot

P09429

#### Immunogen

A synthetic acetylated peptide around K29 of human HMGB1.

#### Synonyms

HMG1; HMG3; HMG-1; SBP-1; Acetyl-HMGB1-K29

### Contact



[www.abclonal.com](http://www.abclonal.com)

### Product Information

#### Source

Rabbit

#### Isotype

IgG

#### Purification

Affinity purification

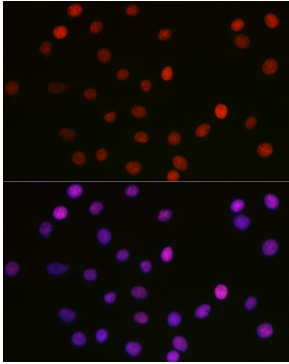
#### Storage

Store at -20°C. Avoid freeze / thaw cycles.

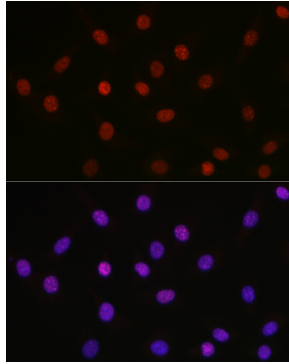
Buffer: PBS with 0.01% thimerosal,50% glycerol,pH7.3.

## Validation Data

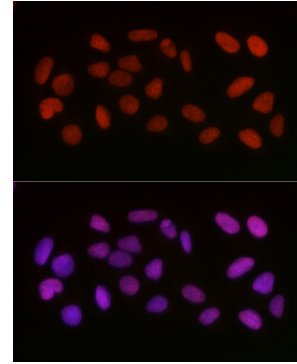
---



Immunofluorescence analysis of C6 cells using Acetyl-HMGB1-K29 Rabbit pAb (A16002) at dilution of 1:100 (40x lens). Secondary antibody: Cy3 Goat Anti-Rabbit IgG (H+L) (AS007) at 1:500 dilution. Blue: DAPI for nuclear staining.



Immunofluorescence analysis of NIH-3T3 cells using Acetyl-HMGB1-K29 Rabbit pAb (A16002) at dilution of 1:100 (40x lens). Secondary antibody: Cy3 Goat Anti-Rabbit IgG (H+L) (AS007) at 1:500 dilution. Blue: DAPI for nuclear staining.



Immunofluorescence analysis of U-2 OS cells using Acetyl-HMGB1-K29 Rabbit pAb (A16002) at dilution of 1:100 (40x lens). Secondary antibody: Cy3 Goat Anti-Rabbit IgG (H+L) (AS007) at 1:500 dilution. Blue: DAPI for nuclear staining.