

A15931

Leader in Biomolecular Solutions for Life Science



## ARMC6 Rabbit pAb

Catalog No.: A15931

### Basic Information

**Observed MW**

54kDa

**Calculated MW**

54kDa

**Category**

Polyclonal Antibody

**Applications**

WB,IF/ICC,ELISA

**Cross-Reactivity**

Human,Mouse,Rat

### Background

The function of this gene's protein product has not been determined. A related protein in mouse suggests that this protein has a conserved function. Two transcript variants encoding different isoforms have been found for this gene.

### Recommended Dilutions

**WB** 1:500 - 1:2000

**IF/ICC** 1:50 - 1:200

### Immunogen Information

**Gene ID**

93436

**Swiss Prot**

Q6NXE6

**Immunogen**

Recombinant fusion protein containing a sequence corresponding to amino acids 1-220 of human ARMC6 (NP\_001186125.1).

**Synonyms**

R30923\_1; ARMC6

### Contact



[www.abclonal.com](http://www.abclonal.com)

### Product Information

**Source**

Rabbit

**Isotype**

IgG

**Purification**

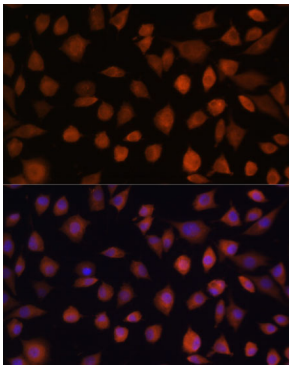
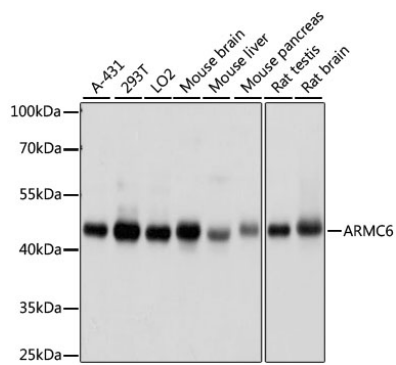
Affinity purification

**Storage**

Store at -20°C. Avoid freeze / thaw cycles.

Buffer: PBS with 0.01% thimerosal,50% glycerol,pH7.3.

## Validation Data



Immunofluorescence analysis of L929 cells using ARMC6 Rabbit pAb (A15931) at dilution of 1:100. Secondary antibody: Cy3 Goat Anti-Rabbit IgG (H+L) (AS007) at 1:500 dilution. Blue: DAPI for nuclear staining.