

A15919

Leader in Biomolecular Solutions for Life Science



## NUDCD1 Rabbit pAb

Catalog No.: A15919

### Basic Information

**Observed MW**

73kDa

**Calculated MW**

67kDa

**Category**

Mouse Monoclonal Antibody

**Applications**

WB, ELISA

**Cross-Reactivity**

Human, Mouse

### Background

Predicted to be involved in immune system process. Located in cytosol and nucleoplasm.

### Recommended Dilutions

WB 1:500 - 1:2000

### Immunogen Information

**Gene ID**

84955

**Swiss Prot**

Q96RS6

**Immunogen**

Recombinant fusion protein containing a sequence corresponding to amino acids 304-583 of human NUDCD1 (NP\_116258.2).

**Synonyms**

CML66; OVA66; NUDCD1

### Contact



[www.abclonal.com](http://www.abclonal.com)

### Product Information

**Source**

Rabbit

**Isotype**

IgG

**Purification**

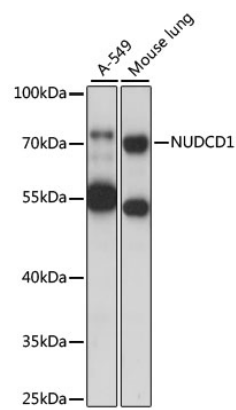
Affinity purification

**Storage**

Store at -20°C. Avoid freeze / thaw cycles.

Buffer: PBS with 0.01% thimerosal, 50% glycerol, pH 7.3.

Validation Data



Western blot analysis of various lysates using NUDCD1 Rabbit pAb (A15919) at 1000 dilution.  
Secondary antibody: HRP Goat Anti-Rabbit IgG (H+L) (AS014) at 1:10000 dilution.  
Lysates/proteins: 25µg per lane.  
Blocking buffer: 3% nonfat dry milk in TBST.  
Detection: ECL Basic Kit (RM00020).  
Exposure time: 5s.