

A15916

Leader in Biomolecular Solutions for Life Science



## AFAP1L2 Rabbit pAb

Catalog No.: A15916

### Basic Information

**Observed MW**

110kDa

**Calculated MW**

91kDa

**Category**

Polyclonal Antibody

**Applications**

WB, ELISA

**Cross-Reactivity**

Human

### Background

Enables SH2 domain binding activity; SH3 domain binding activity; and protein tyrosine kinase activator activity. Involved in several processes, including positive regulation of epidermal growth factor receptor signaling pathway; regulation of gene expression; and regulation of mitotic cell cycle. Located in cytosol and plasma membrane.

### Recommended Dilutions

WB 1:500 - 1:2000

### Immunogen Information

**Gene ID**

84632

**Swiss Prot**

Q8N4X5

**Immunogen**

Recombinant fusion protein containing a sequence corresponding to amino acids 1-300 of human AFAP1L2 (NP\_001001936.1).

**Synonyms**

XB130; KIAA1914; CTB-1144G6.4; AFAP1L2

### Contact



[www.abclonal.com](http://www.abclonal.com)

### Product Information

**Source**

Rabbit

**Isotype**

IgG

**Purification**

Affinity purification

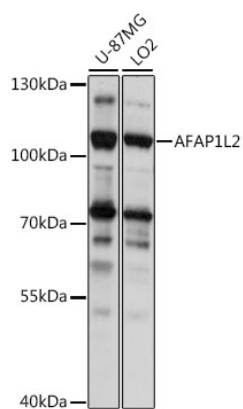
**Storage**

Store at -20°C. Avoid freeze / thaw cycles.

Buffer: PBS with 0.01% thimerosal, 50% glycerol, pH7.3.

## Validation Data

---



Western blot analysis of various lysates using AFAP1L2 Rabbit pAb (A15916) at 1:1000 dilution.  
Secondary antibody: HRP Goat Anti-Rabbit IgG (H+L) (AS014) at 1:10000 dilution.  
Lysates/proteins: 25µg per lane.  
Blocking buffer: 3% nonfat dry milk in TBST.  
Detection: ECL Basic Kit (RM00020).  
Exposure time: 1s.