

# ATL2 Rabbit pAb

Catalog No.: A15884

## Basic Information

### Observed MW

66kDa

### Calculated MW

66kDa

### Category

Primary antibody

### Applications

ELISA, WB, IF/ICC

### Cross-Reactivity

Human, Mouse, Rat

## Background

Enables identical protein binding activity. Involved in Golgi organization; endoplasmic reticulum tubular network membrane organization; and protein homooligomerization. Located in endoplasmic reticulum tubular network membrane. Is integral component of membrane.

## Recommended Dilutions

**WB** 1:500 - 1:1000

**IF/ICC** 1:50 - 1:200

## Immunogen Information

### Gene ID

64225

### Swiss Prot

Q8NHH9

### Immunogen

Recombinant fusion protein containing a sequence corresponding to amino acids 390-470 of human ATL2 (NP\_001129145.1).

### Synonyms

aip-2; ARL3IP2; ARL6IP2; atlastin2; ATL2

## Contact

 | [www.abclonal.com](http://www.abclonal.com)

## Product Information

### Source

Rabbit

### Isotype

IgG

### Purification

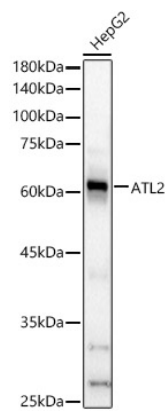
Affinity purification

### Storage

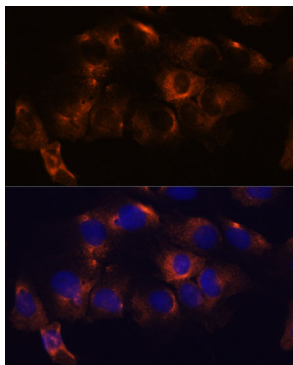
Store at -20°C. Avoid freeze / thaw cycles.

Buffer: PBS with 0.01% thimerosal, 50% glycerol, pH7.3.

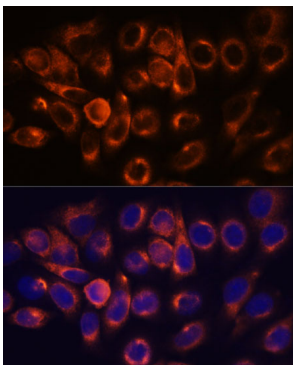
Validation Data



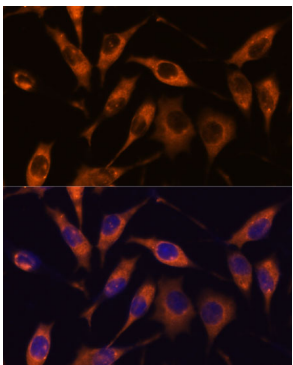
Western blot analysis of HepG2, using ATL2 antibody (A15884) at 1:800 dilution.  
Secondary antibody: HRP Goat Anti-Rabbit IgG (H+L) (AS014) at 1:10000 dilution.  
Lysates/proteins: 25µg per lane.  
Blocking buffer: 3% nonfat dry milk in TBST.  
Detection: ECL Basic Kit (RM00020).  
Exposure time: 20s.



Immunofluorescence analysis of C6 cells using ATL2 antibody (A15884) at dilution of 1:100. Blue: DAPI for nuclear staining.



Immunofluorescence analysis of HeLa cells using ATL2 antibody (A15884) at dilution of 1:100. Blue: DAPI for nuclear staining.



Immunofluorescence analysis of L929 cells using ATL2 antibody (A15884) at dilution of 1:100. Blue: DAPI for nuclear staining.