

A15786

Leader in Biomolecular Solutions for Life Science



## KIF1C Rabbit pAb

Catalog No.: A15786

1 Publications

### Basic Information

#### Observed MW

165kDa

#### Calculated MW

123kDa

#### Category

Polyclonal Antibody

#### Applications

WB, ELISA

#### Cross-Reactivity

Human, Mouse, Rat

### Background

The protein encoded by this gene is a member of the kinesin-like protein family. The family members are microtubule-dependent molecular motors that transport organelles within cells and move chromosomes during cell division. Mutations in this gene are a cause of spastic ataxia 2, autosomal recessive.

### Recommended Dilutions

WB 1:500 - 1:2000

### Immunogen Information

#### Gene ID

10749

#### Swiss Prot

O43896

#### Immunogen

Recombinant fusion protein containing a sequence corresponding to amino acids 810-960 of human KIF1C (NP\_006603.2).

#### Synonyms

SAX2; LTXS1; SATX2; SPAX2; SPG58; KIF1C

### Contact



[www.abclonal.com](http://www.abclonal.com)

### Product Information

#### Source

Rabbit

#### Isotype

IgG

#### Purification

Affinity purification

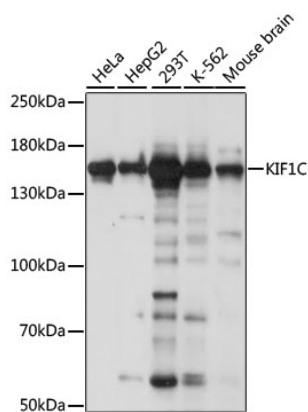
#### Storage

Store at -20°C. Avoid freeze / thaw cycles.

Buffer: PBS with 0.01% thimerosal, 50% glycerol, pH 7.3.

## Validation Data

---



Western blot analysis of various lysates using KIF1C Rabbit pAb (A15786) at 1:1000 dilution.  
Secondary antibody: HRP Goat Anti-Rabbit IgG (H+L) (A5014) at 1:10000 dilution.  
Lysates/proteins: 25µg per lane.  
Blocking buffer: 3% nonfat dry milk in TBST.  
Detection: ECL Basic Kit (RM00020).  
Exposure time: 5s.