

A15772

Leader in Biomolecular Solutions for Life Science



## EDIL3 Rabbit pAb

Catalog No.: A15772

### Basic Information

**Observed MW**

52kDa

**Calculated MW**

54kDa

**Category**

Polyclonal Antibody

**Applications**

WB,IF/ICC,ELISA

**Cross-Reactivity**

Human,Mouse

### Background

The protein encoded by this gene is an integrin ligand. It plays an important role in mediating angiogenesis and may be important in vessel wall remodeling and development. It also influences endothelial cell behavior.

### Recommended Dilutions

<b>WB</b>	1:500 - 1:1000
<b>IF/ICC</b>	1:50 - 1:200

### Immunogen Information

**Gene ID**

10085

**Swiss Prot**

O43854

**Immunogen**

A synthetic peptide corresponding to a sequence within amino acids 350-450 of human EDIL3 (NP\_005702.3).

**Synonyms**

DEL1; EDIL3

### Contact



[www.abclonal.com](http://www.abclonal.com)

### Product Information

**Source**

Rabbit

**Isotype**

IgG

**Purification**

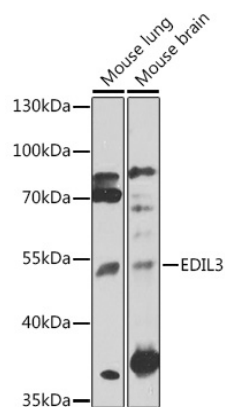
Affinity purification

**Storage**

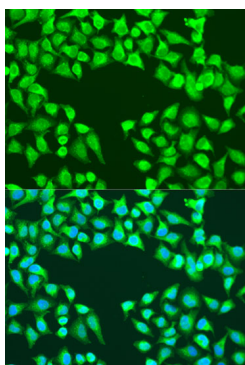
Store at -20°C. Avoid freeze / thaw cycles.

Buffer: PBS with 0.02% sodium azide,50% glycerol,pH7.3.

## Validation Data



Western blot analysis of extracts of various cell lines, using EDIL3 antibody (A15772) at 1:1000 dilution.  
Secondary antibody: HRP Goat Anti-Rabbit IgG (H+L) (A5014) at 1:10000 dilution.  
Lysates/proteins: 25µg per lane.  
Blocking buffer: 3% nonfat dry milk in TBST.  
Detection: ECL Enhanced Kit (RM00021).  
Exposure time: 30s.



Immunofluorescence analysis of U2OS cells using EDIL3 antibody (A15772) at dilution of 1:100. Blue: DAPI for nuclear staining.