

A15740

Leader in Biomolecular Solutions for Life Science



## KDM5C Rabbit pAb

Catalog No.: A15740

3 Publications

### Basic Information

#### Observed MW

180kDa

#### Calculated MW

176kDa

#### Category

Polyclonal Antibody

#### Applications

WB, ELISA

#### Cross-Reactivity

Human, Mouse, Rat

### Background

This gene is a member of the SMCY homolog family and encodes a protein with one ARID domain, one JmjC domain, one JmjN domain and two PHD-type zinc fingers. The DNA-binding motifs suggest this protein is involved in the regulation of transcription and chromatin remodeling. Mutations in this gene have been associated with X-linked cognitive disability. Alternative splicing results in multiple transcript variants.

### Recommended Dilutions

WB 1:1000 - 1:5000

### Immunogen Information

#### Gene ID

8242

#### Swiss Prot

P41229

#### Immunogen

A synthetic peptide corresponding to a sequence within amino acids 1400 to the C-terminus of human KDM5C (XP\_011529128.1).

#### Synonyms

MRXJ; SMCX; MRX13; MRXSJ; XE169; MRXSCJ; JARID1C; DXS1272E; KDM5C

### Contact



[www.abclonal.com](http://www.abclonal.com)

### Product Information

#### Source

Rabbit

#### Isotype

IgG

#### Purification

Affinity purification

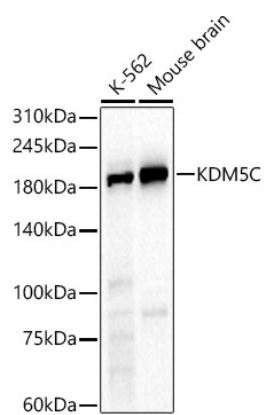
#### Storage

Store at -20°C. Avoid freeze / thaw cycles.

Buffer: PBS with 0.05% proclin300, 50% glycerol, pH7.3.

## Validation Data

---



Western blot analysis of various lysates, using KDM5C antibody (A15740) at 1:2000 dilution.  
Secondary antibody: HRP Goat Anti-Rabbit IgG (H+L) (AS014) at 1:10000 dilution.  
Lysates/proteins: 25µg per lane.  
Blocking buffer: 3% nonfat dry milk in TBST.  
Detection: ECL Basic Kit (RM00020).  
Exposure time: 30s.