

A15731

Leader in Biomolecular Solutions for Life Science



## TCHH Rabbit pAb

Catalog No.: A15731

### Basic Information

**Observed MW**

280kDa

**Calculated MW**

254kDa

**Category**

Polyclonal Antibody

**Applications**

WB, ELISA

**Cross-Reactivity**

Human, Mouse

### Background

The protein encoded by this gene forms crosslinked complexes with itself and keratin intermediate filaments to provide mechanical strength to the hair follicle inner root sheath. The encoded protein also is important for structural integrity of the filiform papillae of the tongue. Defects in this gene are a cause of uncombable hair syndrome.

### Recommended Dilutions

WB 1:500 - 1:2000

### Immunogen Information

**Gene ID**

7062

**Swiss Prot**

Q07283

**Immunogen**

Recombinant fusion protein containing a sequence corresponding to amino acids 100-300 of human TCHH (NP\_009044.2).

**Synonyms**

THH; THL; TRHY; UHS3; TCHH

### Contact



[www.abclonal.com](http://www.abclonal.com)

### Product Information

**Source**

Rabbit

**Isotype**

IgG

**Purification**

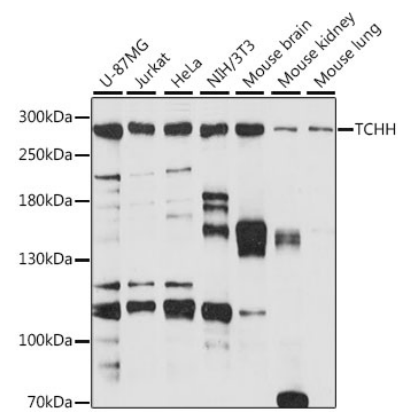
Affinity purification

**Storage**

Store at -20°C. Avoid freeze / thaw cycles.

Buffer: PBS with 0.01% thimerosal, 50% glycerol, pH 7.3.

Validation Data



Western blot analysis of various lysates using TCHH Rabbit pAb (A15731) at 1:1000 dilution.  
Secondary antibody: HRP Goat Anti-Rabbit IgG (H+L) (A5014) at 1:10000 dilution.  
Lysates/proteins: 25µg per lane.  
Blocking buffer: 3% nonfat dry milk in TBST.  
Detection: ECL Basic Kit (RM00020).  
Exposure time: 60s.