

A15718

Leader in Biomolecular Solutions for Life Science



## p90Rsk/RSK1/RPS6KA1 Rabbit pAb

Catalog No.: A15718

4 Publications

### Basic Information

#### Observed MW

90kDa

#### Calculated MW

83kDa

#### Category

Polyclonal Antibody

#### Applications

WB, IHC-P, IF/ICC, ELISA

#### Cross-Reactivity

Human, Mouse, Rat

### Background

This gene encodes a member of the RSK (ribosomal S6 kinase) family of serine/threonine kinases. This kinase contains 2 nonidentical kinase catalytic domains and phosphorylates various substrates, including members of the mitogen-activated kinase (MAPK) signalling pathway. The activity of this protein has been implicated in controlling cell growth and differentiation. Alternate transcriptional splice variants, encoding different isoforms, have been characterized.

### Recommended Dilutions

|        |                |
|--------|----------------|
| WB     | 1:500 - 1:2000 |
| IHC-P  | 1:100 - 1:200  |
| IF/ICC | 1:50 - 1:200   |

### Immunogen Information

#### Gene ID

6195

#### Swiss Prot

Q15418

#### Immunogen

A synthetic peptide corresponding to a sequence within amino acids 600 to the C-terminus of human p90Rsk/RSK1/RPS6KA1 (NP\_002944.2).

#### Synonyms

RSK; HU-1; RSK1; p90Rsk; MAPKAPK1; MAPKAPK1A; p90Rsk/RSK1/RPS6KA1

### Contact



[www.abclonal.com](http://www.abclonal.com)

### Product Information

#### Source

Rabbit

#### Isotype

IgG

#### Purification

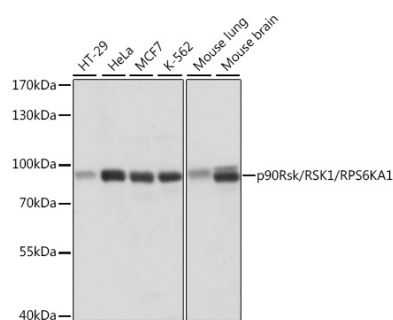
Affinity purification

#### Storage

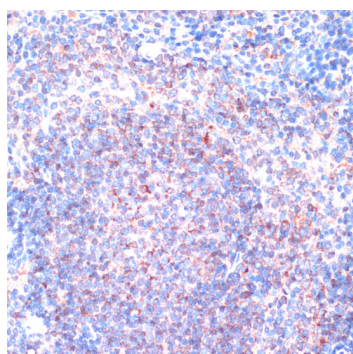
Store at -20°C. Avoid freeze / thaw cycles.

Buffer: PBS with 0.01% thimerosal, 50% glycerol, pH7.3.

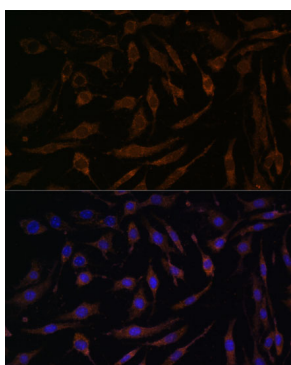
## Validation Data



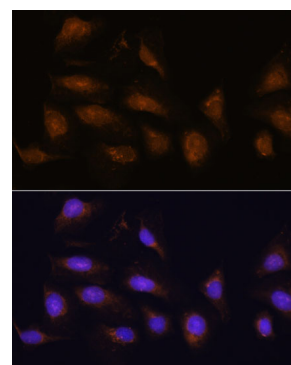
Western blot analysis of various lysates using p90Rsk/RSK1/RPS6KA1 Rabbit pAb (A15718) at 1:1000 dilution.  
 Secondary antibody: HRP Goat Anti-Rabbit IgG (H+L) (AS014) at 1:10000 dilution.  
 Lysates/proteins: 25µg per lane.  
 Blocking buffer: 3% nonfat dry milk in TBST.  
 Detection: ECL Basic Kit (RM00020).  
 Exposure time: 1s.



Immunohistochemistry analysis of p90Rsk/RSK1/RPS6KA1 in paraffin-embedded mouse spleen using p90Rsk/RSK1/RPS6KA1 Rabbit pAb (A15718) at dilution of 1:100 (40x lens). Perform microwave antigen retrieval with 10 mM PBS buffer pH 7.2 before commencing with IHC staining protocol.



Immunofluorescence analysis of L929 cells using p90Rsk/RSK1/RPS6KA1 Rabbit pAb (A15718) at dilution of 1:100. Secondary antibody: Cy3 Goat Anti-Rabbit IgG (H+L) (AS007) at 1:500 dilution. Blue: DAPI for nuclear staining.



Immunofluorescence analysis of U-2 OS cells using p90Rsk/RSK1/RPS6KA1 Rabbit pAb (A15718) at dilution of 1:100. Secondary antibody: Cy3 Goat Anti-Rabbit IgG (H+L) (AS007) at 1:500 dilution. Blue: DAPI for nuclear staining.