

A15645

Leader in Biomolecular Solutions for Life Science



## ATM Rabbit pAb

Catalog No.: A15645

### Basic Information

#### Observed MW

#### Calculated MW

351kDa

#### Category

Mouse Monoclonal Antibody

#### Applications

IF/ICC,ELISA

#### Cross-Reactivity

Human,Rat

### Background

The protein encoded by this gene belongs to the PI3/PI4-kinase family. This protein is an important cell cycle checkpoint kinase that phosphorylates; thus, it functions as a regulator of a wide variety of downstream proteins, including tumor suppressor proteins p53 and BRCA1, checkpoint kinase CHK2, checkpoint proteins RAD17 and RAD9, and DNA repair protein NBS1. This protein and the closely related kinase ATR are thought to be master controllers of cell cycle checkpoint signaling pathways that are required for cell response to DNA damage and for genome stability. Mutations in this gene are associated with ataxia telangiectasia, an autosomal recessive disorder.

### Recommended Dilutions

IF/ICC 1:50 - 1:200

### Immunogen Information

#### Gene ID

472

#### Swiss Prot

Q13315

#### Immunogen

Recombinant fusion protein containing a sequence corresponding to amino acids 2320-2566 of ATM (NP\_000042.3).

#### Synonyms

AT1; ATA; ATC; ATD; ATE; ATDC; TEL1; TELO1; ATM

### Contact



[www.abclonal.com](http://www.abclonal.com)

### Product Information

#### Source

Rabbit

#### Isotype

IgG

#### Purification

Affinity purification

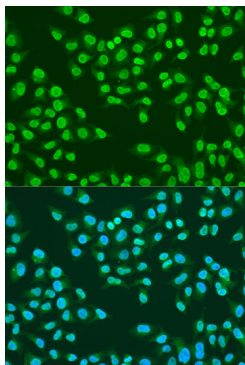
#### Storage

Store at -20°C. Avoid freeze / thaw cycles.

Buffer: PBS with 0.01% thimerosal, 50% glycerol, pH7.3.

## Validation Data

---



Immunofluorescence analysis of U2OS cells using ATM Rabbit pAb (A15645) at dilution of 1:100. Secondary antibody: Cy3 Goat Anti-Rabbit IgG (H+L) (AS007) at 1:500 dilution. Blue: DAPI for nuclear staining.