

A15613

Leader in Biomolecular Solutions for Life Science



GLI3 Rabbit pAb

Catalog No.: A15613

2 Publications

Basic Information

Observed MW

Refer to figures

Calculated MW

170kDa

Category

Polyclonal Antibody

Applications

IHC-P, ELISA

Cross-Reactivity

Human, Mouse, Rat

Background

This gene encodes a protein which belongs to the C2H2-type zinc finger proteins subclass of the Gli family. They are characterized as DNA-binding transcription factors and are mediators of Sonic hedgehog (Shh) signaling. The protein encoded by this gene localizes in the cytoplasm and activates patched Drosophila homolog (PTCH) gene expression. It is also thought to play a role during embryogenesis. Mutations in this gene have been associated with several diseases, including Greig cephalopolysyndactyly syndrome, Pallister-Hall syndrome, preaxial polydactyly type IV, and postaxial polydactyly types A1 and B.

Recommended Dilutions

IHC-P 1:50 - 1:200

Immunogen Information

Gene ID

2737

Swiss Prot

P10071

Immunogen

A synthetic peptide corresponding to a sequence within amino acids 681-788 of human GLI3 (NP_000159.3).

Synonyms

PHS; ACLS; GCPS; PAPA; PAPB; PAP-A; PAPA1; PPDIV; GLI3FL; GLI3-190; GLI3

Contact



www.abclonal.com

Product Information

Source

Rabbit

Isotype

IgG

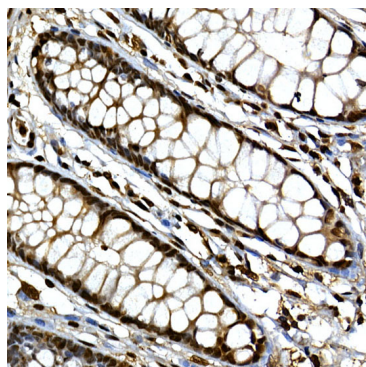
Purification

Affinity purification

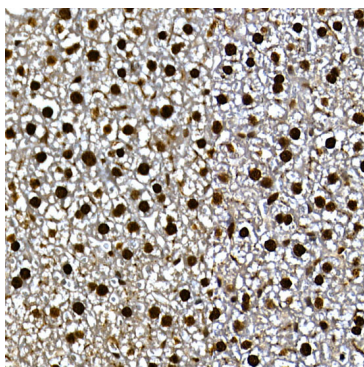
Storage

Store at -20°C. Avoid freeze / thaw cycles.

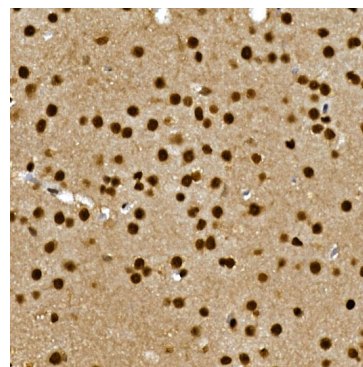
Buffer: PBS with 0.01% thimerosal, 50% glycerol, pH 7.3.



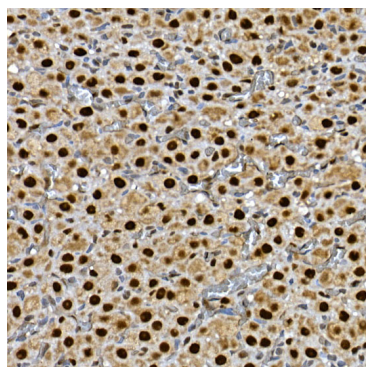
Immunohistochemistry analysis of paraffin-embedded human colon using GLI3 Rabbit pAb (A15613) at dilution of 1:100 (40x lens). Perform high pressure antigen retrieval with 10 mM citrate buffer pH 6.0 before commencing with IHC staining protocol.



Immunohistochemistry analysis of paraffin-embedded mouse liver using GLI3 Rabbit pAb (A15613) at dilution of 1:100 (40x lens). Perform high pressure antigen retrieval with 10 mM citrate buffer pH 6.0 before commencing with IHC staining protocol.



Immunohistochemistry analysis of paraffin-embedded rat brain using GLI3 Rabbit pAb (A15613) at dilution of 1:100 (40x lens). Perform high pressure antigen retrieval with 10 mM citrate buffer pH 6.0 before commencing with IHC staining protocol.



Immunohistochemistry analysis of paraffin-embedded rat ovary using GLI3 Rabbit pAb (A15613) at dilution of 1:100 (40x lens). Perform high pressure antigen retrieval with 10 mM citrate buffer pH 6.0 before commencing with IHC staining protocol.