

# ACC1 Rabbit pAb

Catalog No.: A15606 **16 Publications**

## Basic Information

**Observed MW**

240kDa

**Calculated MW**

266kDa

**Category**

Primary antibody

**Applications**

ELISA, WB, IHC-P, IF/ICC, IP

**Cross-Reactivity**

Human, Mouse, Rat

## Background

Acetyl-CoA carboxylase (ACC) is a complex multifunctional enzyme system. ACC is a biotin-containing enzyme which catalyzes the carboxylation of acetyl-CoA to malonyl-CoA, the rate-limiting step in fatty acid synthesis. There are two ACC forms, alpha and beta, encoded by two different genes. ACC-alpha is highly enriched in lipogenic tissues. The enzyme is under long term control at the transcriptional and translational levels and under short term regulation by the phosphorylation/dephosphorylation of targeted serine residues and by allosteric transformation by citrate or palmitoyl-CoA. Multiple alternatively spliced transcript variants divergent in the 5' sequence and encoding distinct isoforms have been found for this gene.

## Recommended Dilutions

**WB** 1:500 - 1:2000**IHC-P** 1:50 - 1:200**IF/ICC** 1:50 - 1:200**IP** 0.5µg-4µg antibody for  
200µg-400µg extracts of  
whole cells

## Immunogen Information

**Gene ID**

31

**Swiss Prot**

Q13085

**Immunogen**

Recombinant fusion protein containing a sequence corresponding to amino acids 2266-2346 of human ACC1 (NP\_942133.1).

**Synonyms**

ACC; ACAC; ACC1; ACCA; Acac1; hACC1; ACACAD; ACCalpha; ACACalpha

## Contact

 | [www.abclonal.com](http://www.abclonal.com)

## Product Information

**Source**

Rabbit

**Isotype**

IgG

**Purification**

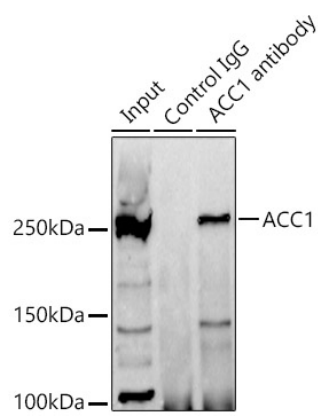
Affinity purification

**Storage**

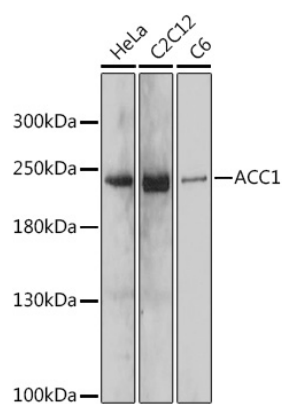
Store at -20°C. Avoid freeze / thaw cycles.

Buffer: PBS with 0.01% thimerosal, 50% glycerol, pH7.3.

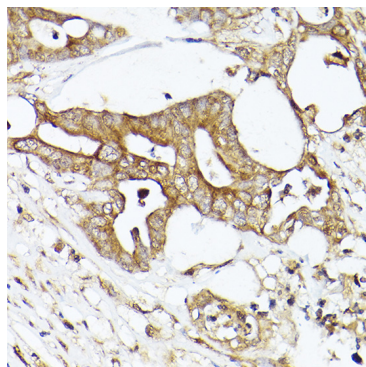
Validation Data



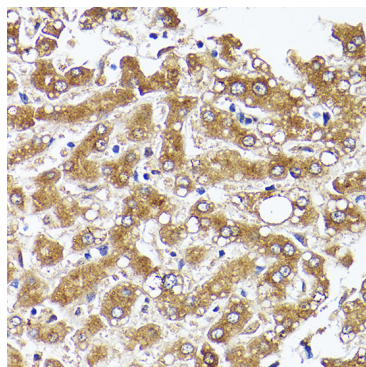
Immunoprecipitation analysis of 300 µg extracts of 293T cells using 3 µg ACC1 antibody (A15606). Western blot was performed from the immunoprecipitate using ACC1 antibody (A15606) at a dilution of 1:1000.



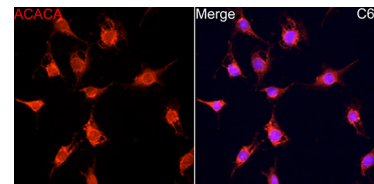
Western blot analysis of various lysates using ACC1 Rabbit pAb (A15606) at 1:1000 dilution. Secondary antibody: HRP Goat Anti-Rabbit IgG (H+L) (AS014) at 1:10000 dilution. Lysates/proteins: 25µg per lane. Blocking buffer: 3% nonfat dry milk in TBST. Detection: ECL Basic Kit (RM00020). Exposure time: 30s.



Immunohistochemistry analysis of ACC1 in paraffin-embedded human colon carcinoma using ACC1 Rabbit pAb (A15606) at dilution of 1:50 (40x lens). Perform high pressure antigen retrieval with 10 mM citrate buffer pH 6.0 before commencing with IHC staining protocol.



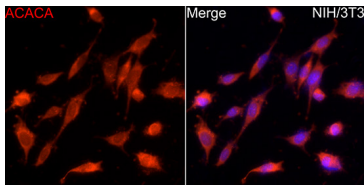
Immunohistochemistry analysis of ACC1 in paraffin-embedded human liver using ACC1 Rabbit pAb (A15606) at dilution of 1:50 (40x lens). Perform high pressure antigen retrieval with 10 mM citrate buffer pH 6.0 before commencing with IHC staining protocol.



Immunofluorescence analysis of C6 cells using ACC1 Rabbit pAb (A15606) at dilution of 1:100 (40x lens). Secondary antibody: Cy3 Goat Anti-Rabbit IgG (H+L) (AS007) at 1:500 dilution. Blue: DAPI for nuclear staining.

## Validation Data

---



Immunofluorescence analysis of NIH/3T3 cells using ACC1 Rabbit pAb (A15606) at dilution of 1:100 (40x lens). Secondary antibody: Cy3 Goat Anti-Rabbit IgG (H+L) (AS007) at 1:500 dilution. Blue: DAPI for nuclear staining.