

A15597

Leader in Biomolecular Solutions for Life Science



PDE10A Rabbit pAb

Catalog No.: A15597

Basic Information

Observed MW

88kDa

Calculated MW

88kDa

Category

Polyclonal Antibody

Applications

WB,IF/ICC,ELISA

Cross-Reactivity

Human,Rat

Background

The protein encoded by this gene belongs to the cyclic nucleotide phosphodiesterase family. It plays a role in signal transduction by regulating the intracellular concentration of cyclic nucleotides. This protein can hydrolyze both cAMP and cGMP to the corresponding nucleoside 5' monophosphate, but has higher affinity for cAMP, and is more efficient with cAMP as substrate. Alternatively spliced transcript variants have been described for this gene.

Recommended Dilutions

WB	1:500 - 1:2000
IF/ICC	1:50 - 1:200

Immunogen Information

Gene ID

10846

Swiss Prot

Q9Y233

Immunogen

Recombinant fusion protein containing a sequence corresponding to amino acids 23-200 of human PDE10A (NP_001124162.1).

Synonyms

ADSD2; IOLOD; HSPDE10A; PDE10A19; LINC00473; PDE10A

Contact



www.abclonal.com

Product Information

Source

Rabbit

Isotype

IgG

Purification

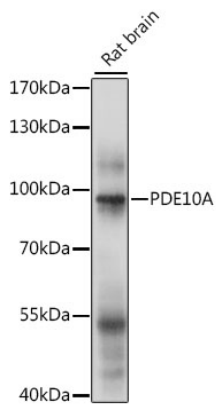
Affinity purification

Storage

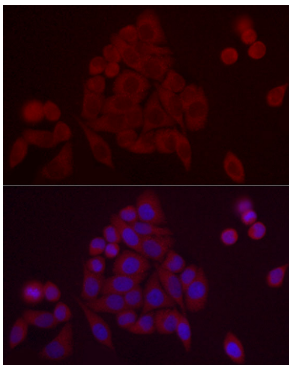
Store at -20°C. Avoid freeze / thaw cycles.

Buffer: PBS with 0.01% thimerosal, 50% glycerol, pH7.3.

Validation Data



Western blot analysis of extracts of rat brain, using PDE10A antibody (A15597) at 1:1000 dilution.
Secondary antibody: HRP Goat Anti-Rabbit IgG (H+L) (AS014) at 1:10000 dilution.
Lysates/proteins: 25µg per lane.
Blocking buffer: 3% nonfat dry milk in TBST.
Detection: ECL Basic Kit (RM00020).
Exposure time: 5s.



Immunofluorescence analysis of HeLa cells using PDE10A Rabbit pAb (A15597) at dilution of 1:20 (40x lens). Blue: DAPI for nuclear staining.