

A15591

Leader in Biomolecular Solutions for Life Science



## LC3A / LC3B Rabbit pAb

Catalog No.: A15591 **4 Publications**

### Basic Information

#### Observed MW

14kDa, 16kDa/14kDa/16kDa

#### Calculated MW

14kDa

#### Category

Polyclonal Antibody

#### Applications

WB, IHC-P, ELISA

#### Cross-Reactivity

Human, Mouse

### Background

The product of this gene is a subunit of neuronal microtubule-associated MAP1A and MAP1B proteins, which are involved in microtubule assembly and important for neurogenesis. Studies on the rat homolog implicate a role for this gene in autophagy, a process that involves the bulk degradation of cytoplasmic component.

### Recommended Dilutions

WB	1:500 - 1:1000
IHC-P	1:50 - 1:200

### Immunogen Information

#### Gene ID

84557/81631

#### Swiss Prot

Q9GZQ8/Q9H492

#### Immunogen

Recombinant fusion protein containing a sequence corresponding to amino acids 1-125 of human LC3A / LC3B (NP\_073729.1).

#### Synonyms

MAP1LC3B; ATG8F; LC3B; MAP1A/1BLC3; MAP1LC3B-a; MAP1LC3A; ATG8E; LC3; LC3A; MAP1ALC3; MAP1BLC3; LC3A/LC3B; LC3A / LC3B

### Contact



[www.abclonal.com](http://www.abclonal.com)

### Product Information

#### Source

Rabbit

#### Isotype

IgG

#### Purification

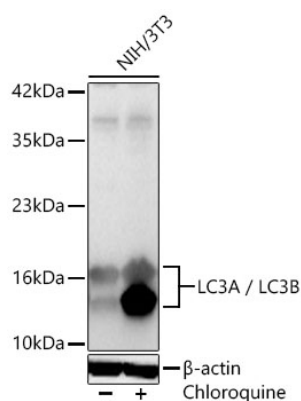
Affinity purification

#### Storage

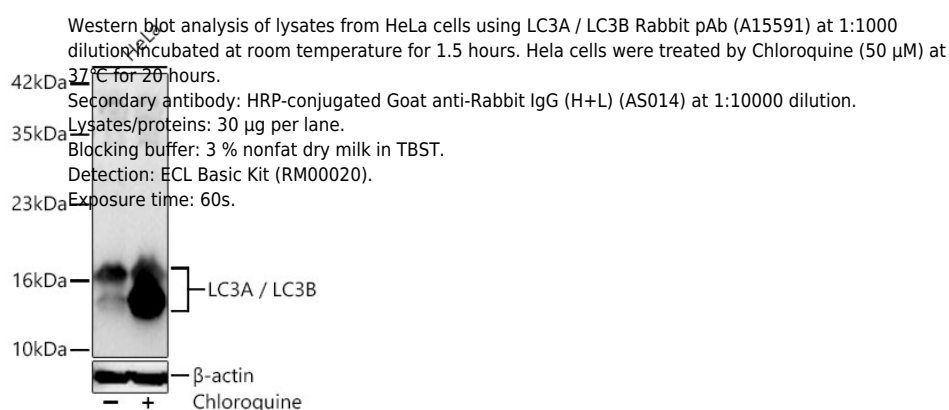
Store at -20°C. Avoid freeze / thaw cycles.

Buffer: PBS with 0.09% Sodium azide, 50% glycerol, pH 7.3.

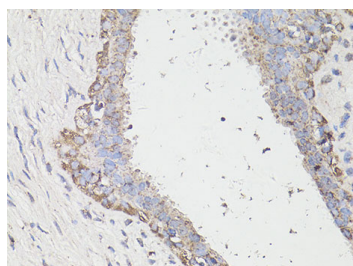
## Validation Data



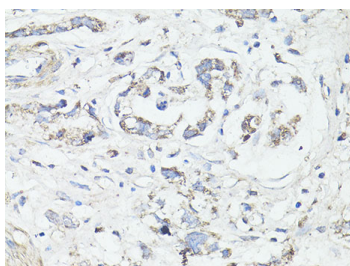
Western blot analysis of lysates from NIH/3T3 cells using LC3A / LC3B Rabbit pAb (A15591) at 1:1000 dilution incubated at room temperature for 1.5 hours. NIH/3T3 cells were treated by Chloroquine (50  $\mu$ M) at 37°C for 20 hours.  
Secondary antibody: HRP-conjugated Goat anti-Rabbit IgG (H+L) (AS014) at 1:10000 dilution.  
Lysates/proteins: 30  $\mu$ g per lane.  
Blocking buffer: 3 % nonfat dry milk in TBST.  
Detection: ECL Basic Kit (RM00020).  
Exposure time: 60s.



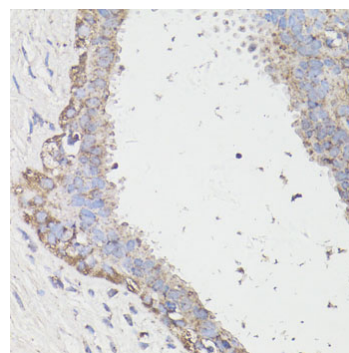
Western blot analysis of lysates from HeLa cells using LC3A / LC3B Rabbit pAb (A15591) at 1:1000 dilution incubated at room temperature for 1.5 hours. HeLa cells were treated by Chloroquine (50  $\mu$ M) at 37°C for 20 hours.  
Secondary antibody: HRP-conjugated Goat anti-Rabbit IgG (H+L) (AS014) at 1:10000 dilution.  
Lysates/proteins: 30  $\mu$ g per lane.  
Blocking buffer: 3 % nonfat dry milk in TBST.  
Detection: ECL Basic Kit (RM00020).  
Exposure time: 60s.



Immunohistochemistry analysis of LC3A / LC3B in paraffin-embedded human breast cancer using LC3A / LC3B Rabbit pAb (A15591) at dilution of 1:100 (40x lens). Perform microwave antigen retrieval with 10 mM PBS buffer pH 7.2 before commencing with IHC staining protocol.



Immunohistochemistry analysis of LC3A / LC3B in paraffin-embedded human gastric cancer using LC3A / LC3B Rabbit pAb (A15591) at dilution of 1:100 (40x lens). Perform microwave antigen retrieval with 10 mM PBS buffer pH 7.2 before commencing with IHC staining protocol.



Immunohistochemistry analysis of LC3A / LC3B in paraffin-embedded human mammary cancer using LC3A / LC3B Rabbit pAb (A15591) at dilution of 1:100 (40x lens). Perform microwave antigen retrieval with 10 mM PBS buffer pH 7.2 before commencing with IHC staining protocol.