

A15559

Leader in Biomolecular Solutions for Life Science



TOP1MT Rabbit pAb

Catalog No.: A15559

Basic Information

Observed MW

70kDa

Calculated MW

70kDa

Category

Mouse Monoclonal Antibody

Applications

WB,IHC-P,ELISA

Cross-Reactivity

Human,Rat

Background

This gene encodes a mitochondrial DNA topoisomerase that plays a role in the modification of DNA topology. The encoded protein is a type IB topoisomerase and catalyzes the transient breaking and rejoining of DNA to relieve tension and DNA supercoiling generated in the mitochondrial genome during replication and transcription. Alternatively spliced transcript variants encoding multiple isoforms have been observed for this gene.

Recommended Dilutions

WB	1:200 - 1:2000
IHC-P	1:50 - 1:200

Immunogen Information

Gene ID

116447

Swiss Prot

Q969P6

Immunogen

Recombinant fusion protein containing a sequence corresponding to amino acids 470-550 of human TOP1MT (NP_443195.1).

Synonyms

TOP1MT

Contact



www.abclonal.com

Product Information

Source

Rabbit

Isotype

IgG

Purification

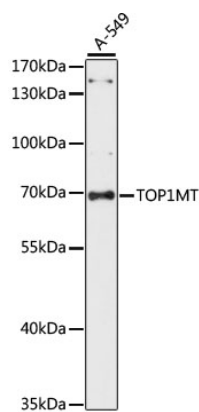
Affinity purification

Storage

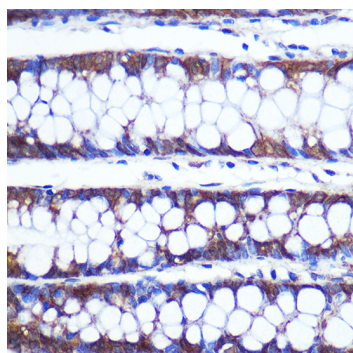
Store at -20°C. Avoid freeze / thaw cycles.

Buffer: PBS with 0.01% thimerosal,50% glycerol,pH7.3.

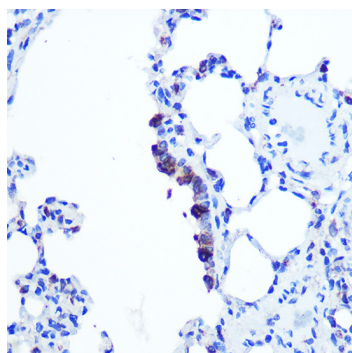
Validation Data



Western blot analysis of lysates from A-549 cells, using TOP1MT Rabbit pAb (A15559) at 1:1000 dilution.
Secondary antibody: HRP Goat Anti-Rabbit IgG (H+L) (AS014) at 1:10000 dilution.
Lysates/proteins: 25µg per lane.
Blocking buffer: 3% nonfat dry milk in TBST.
Detection: ECL Basic Kit (RM00020).
Exposure time: 60S.



Immunohistochemistry analysis of TOP1MT in paraffin-embedded Human colon using TOP1MT Rabbit pAb (A15559) at dilution of 1:100 (40x lens). Perform microwave antigen retrieval with 10 mM PBS buffer pH 7.2 before commencing with IHC staining protocol.



Immunohistochemistry analysis of TOP1MT in paraffin-embedded Rat lung using TOP1MT Rabbit pAb (A15559) at dilution of 1:100 (40x lens). Perform microwave antigen retrieval with 10 mM PBS buffer pH 7.2 before commencing with IHC staining protocol.