

A15518

Leader in Biomolecular Solutions for Life Science



## WDR82 Rabbit pAb

Catalog No.: A15518

### Basic Information

**Observed MW**

35kDa

**Calculated MW**

35kDa

**Category**

Mouse Monoclonal Antibody

**Applications**

WB, ELISA

**Cross-Reactivity**

Human, Mouse, Rat

### Background

TMEM113 (WDR82) is a component of the mammalian SET1A (MIM 611052)/SET1B (MIM 611055) histone H3-Lys4 methyltransferase complexes (Lee and Skalnik, 2005 [PubMed 16253997]; Lee et al., 2007 [PubMed 17355966]).

### Recommended Dilutions

WB 1:200 - 1:2000

### Immunogen Information

**Gene ID**

80335

**Swiss Prot**

Q6UXN9

**Immunogen**

Recombinant fusion protein containing a sequence corresponding to amino acids 174-313 of human WDR82 (NP\_079498.2).

**Synonyms**

SWD2; MST107; WDR82A; MSTP107; PRO2730; TMEM113; PRO34047; WDR82

### Contact



[www.abclonal.com](http://www.abclonal.com)

### Product Information

**Source**

Rabbit

**Isotype**

IgG

**Purification**

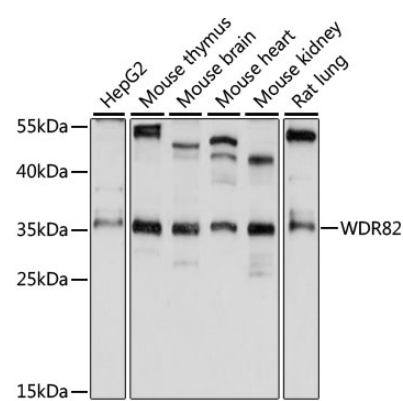
Affinity purification

**Storage**

Store at -20°C. Avoid freeze / thaw cycles.

Buffer: PBS with 0.01% thimerosal, 50% glycerol, pH 7.3.

Validation Data



Western blot analysis of various lysates using WDR82 Rabbit pAb (A15518) at 1:1000 dilution.  
Secondary antibody: HRP Goat Anti-Rabbit IgG (H+L) (AS014) at 1:10000 dilution.  
Lysates/proteins: 25µg per lane.  
Blocking buffer: 3% nonfat dry milk in TBST.  
Detection: ECL Basic Kit (RM00020).  
Exposure time: 10s.