

A15491

Leader in Biomolecular Solutions for Life Science



## LRRC4C Rabbit pAb

Catalog No.: A15491

### Basic Information

#### Observed MW

72kDa

#### Calculated MW

72kDa

#### Category

Mouse Monoclonal Antibody

#### Applications

WB, ELISA

#### Cross-Reactivity

Rat

### Background

NGL1 is a specific binding partner for netrin G1 (NTNG1; MIM 608818), which is a member of the netrin family of axon guidance molecules (Lin et al., 2003 [PubMed 14595443]).

### Recommended Dilutions

WB 1:200 - 1:2000

### Immunogen Information

#### Gene ID

57689

#### Swiss Prot

Q9HCJ2

#### Immunogen

Recombinant fusion protein containing a sequence corresponding to amino acids 450-520 of human LRRC4C (NP\_065980.1).

#### Synonyms

NGL1; NGL-1; LRRC4C

### Contact



[www.abclonal.com](http://www.abclonal.com)

### Product Information

#### Source

Rabbit

#### Isotype

IgG

#### Purification

Affinity purification

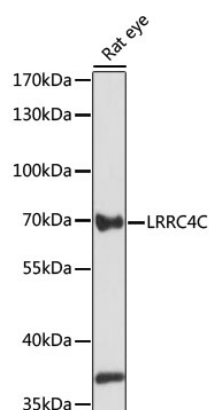
#### Storage

Store at -20°C. Avoid freeze / thaw cycles.

Buffer: PBS with 0.01% thimerosal, 50% glycerol, pH 7.3.

## Validation Data

---



Western blot analysis of lysates from rat eye, using LRRC4C Rabbit pAb (A15491) at 1:1000 dilution.  
Secondary antibody: HRP Goat Anti-Rabbit IgG (H+L) (A5014) at 1:10000 dilution.  
Lysates/proteins: 25µg per lane.  
Blocking buffer: 3% nonfat dry milk in TBST.  
Detection: ECL Basic Kit (RM00020).  
Exposure time: 60s.