

A15474

Leader in Biomolecular Solutions for Life Science



MFN1 Rabbit pAb

Catalog No.: A15474

4 Publications

Basic Information

Observed MW

84kDa

Calculated MW

83kDa

Category

Polyclonal Antibody

Applications

WB, ELISA

Cross-Reactivity

Human, Mouse, Rat

Background

Predicted to enable GTPase activity and identical protein binding activity. Involved in mitochondrial fusion and positive regulation of mitochondrial membrane potential. Located in mitochondrion. Is expressed in embryo; heart; and placenta. Orthologous to human MFN1 (mitofusin 1).

Recommended Dilutions

WB 1:100 - 1:500

Immunogen Information

Gene ID

67414

Swiss Prot

Immunogen

A synthetic peptide corresponding to a sequence within amino acids 1-100 of mouse MFN1 (NP_077162.2).

Synonyms

HR2; mKIAA4032; D3Ert265e; 2310002F04Rik; 6330416C07Rik; MFN1

Contact



www.abclonal.com

Product Information

Source

Rabbit

Isotype

IgG

Purification

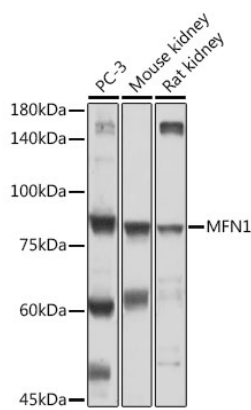
Affinity purification

Storage

Store at -20°C. Avoid freeze / thaw cycles.

Buffer: PBS with 0.02% sodium azide, 50% glycerol, pH 7.3.

Validation Data



Western blot analysis of extracts of various cell lines, using MFN1 antibody (A15474) at 1:500 dilution.
Secondary antibody: HRP Goat Anti-Rabbit IgG (H+L) (AS014) at 1:10000 dilution.
Lysates/proteins: 25µg per lane.
Blocking buffer: 3% nonfat dry milk in TBST.
Detection: ECL Basic Kit (RM00020).
Exposure time: 60s.