

G6PD Rabbit pAb

Catalog No.	A1537	Category	Polyclonal Antibodies
Applications	WB	Observed MW	60kDa
Cross-reactivity	Human, Mouse	Calculated MW	59kDa/62kDa/63kDa

Immunogen Information

Immunogen	Recombinant fusion protein containing a sequence corresponding to amino acids 246-545 of human G6PD (NP_000393.4).
Gene ID	2539
Swiss prot	P11413
Synonyms	G6PD;G6PD1

Product information

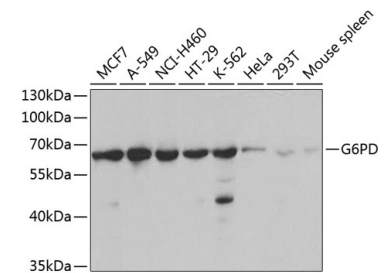
Source	Rabbit
Isotype	IgG
Purification method	Affinity purification
Storage	Store at -20°C. Avoid freeze / thaw cycles. Buffer: PBS with 0.02% sodium azide, 50% glycerol, pH7.3.

Background

This gene encodes glucose-6-phosphate dehydrogenase. This protein is a cytosolic enzyme encoded by a housekeeping X-linked gene whose main function is to produce NADPH, a key electron donor in the defense against oxidizing agents and in reductive biosynthetic reactions. G6PD is remarkable for its genetic diversity. Many variants of G6PD, mostly produced from missense mutations, have been described with wide ranging levels of enzyme activity and associated clinical symptoms. G6PD deficiency may cause neonatal jaundice, acute hemolysis, or severe chronic non-spherocytic hemolytic anemia. Two transcript variants encoding different isoforms have been found for this gene.

Recommended Dilutions

WB 1:500 - 1:2000



Western blot analysis of extracts of various cell lines, using G6PD antibody (A1537) at 1:1000 dilution. Secondary antibody: HRP Goat Anti-Rabbit IgG (H+L) (AS014) at 1:10000 dilution.
Lysates/proteins: 25ug per lane.
Blocking buffer: 3% nonfat dry milk in TBST.