

# Dopamine Transporter/SLC6A3 Rabbit pAb

Catalog No.: A15236 **2 Publications**

## Basic Information

**Observed MW**

72kDa

**Calculated MW**

68kDa

**Category**

Primary antibody

**Applications**

ELISA, WB, IHC-P, IF/ICC

**Cross-Reactivity**

Human, Mouse, Rat

## Background

This gene encodes a dopamine transporter which is a member of the sodium- and chloride-dependent neurotransmitter transporter family. The 3' UTR of this gene contains a 40 bp tandem repeat, referred to as a variable number tandem repeat or VNTR, which can be present in 3 to 11 copies. Variation in the number of repeats is associated with idiopathic epilepsy, attention-deficit hyperactivity disorder, dependence on alcohol and cocaine, susceptibility to Parkinson disease and protection against nicotine dependence.

## Recommended Dilutions

<b>WB</b>	1:500 - 1:1000
<b>IHC-P</b>	1:50 - 1:100
<b>IF/ICC</b>	1:50 - 1:200

## Immunogen Information

**Gene ID**

6531

**Swiss Prot**

Q01959

**Immunogen**

A synthetic peptide corresponding to a sequence within amino acids 1-100 of human Dopamine Transporter/SLC6A3 (NP\_001035.1).

**Synonyms**

DAT; DAT1; PKDYS; PKDYS1; Dopamine Transporter/SLC6A3

## Contact

 | [www.abclonal.com](http://www.abclonal.com)

## Product Information

**Source**

Rabbit

**Isotype**

IgG

**Purification**

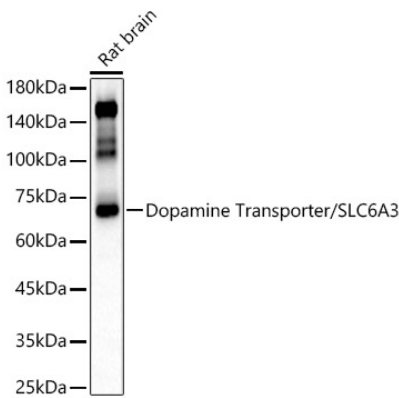
Affinity purification

**Storage**

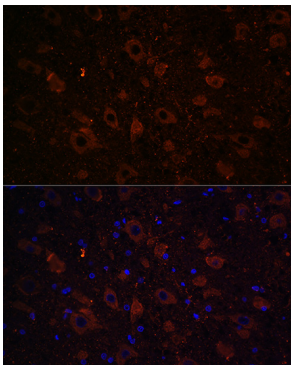
Store at -20°C. Avoid freeze / thaw cycles.

Buffer: PBS with 0.01% thimerosal, 50% glycerol, pH7.3.

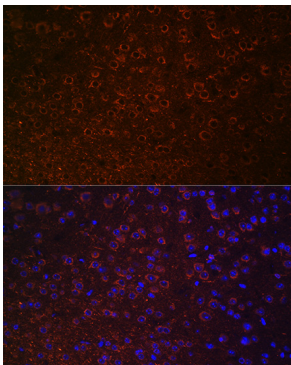
Validation Data



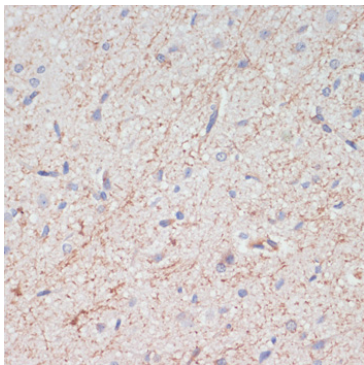
Western blot analysis of Rat brain, using Dopamine Transporter/SLC6A3 antibody (A15236) at 1:700 dilution.  
Secondary antibody: HRP Goat Anti-Rabbit IgG (H+L) (A5014) at 1:10000 dilution.  
Lysates/proteins: 25µg per lane.  
Blocking buffer: 3% nonfat dry milk in TBST.  
Detection: ECL Basic Kit (RM00020).  
Exposure time: 30s.



Immunofluorescence analysis of rat brain using Dopamine Transporter/SLC6A3 Rabbit pAb (A15236) at dilution of 1:100 (40x lens). Blue: DAPI for nuclear staining.



Immunofluorescence analysis of mouse brain using Dopamine Transporter/SLC6A3 Rabbit pAb (A15236) at dilution of 1:100 (40x lens). Blue: DAPI for nuclear staining.



Immunohistochemistry analysis of paraffin-embedded rat brain using Dopamine Transporter/SLC6A3 antibody (A15236) at dilution of 1:200 (40x lens). Perform microwave antigen retrieval with 10 mM PBS buffer pH 7.2 before commencing with IHC staining protocol.