

A15139

Leader in Biomolecular Solutions for Life Science



## MAP4K5 Rabbit pAb

Catalog No.: A15139

### Basic Information

#### Observed MW

Refer to figures

#### Calculated MW

95kDa

#### Category

Mouse Monoclonal Antibody

#### Applications

IF/ICC,ELISA

#### Cross-Reactivity

Human,Mouse,Rat

### Background

This gene encodes a member of the serine/threonine protein kinase family, that is highly similar to yeast SPS1/STE20 kinase. Yeast SPS1/STE20 functions near the beginning of the MAP kinase signal cascades that is essential for yeast pheromone response. This kinase was shown to activate Jun kinase in mammalian cells, which suggested a role in stress response. Two alternatively spliced transcript variants encoding the same protein have been described for this gene.

### Recommended Dilutions

IF/ICC 1:50 - 1:200

### Immunogen Information

#### Gene ID

11183

#### Swiss Prot

Q9Y4K4

#### Immunogen

Recombinant fusion protein containing a sequence corresponding to amino acids 300-480 of human MAP4K5 (NP\_006566.2).

#### Synonyms

KHS; GCKR; KHS1; MAPKKKK5; MAP4K5

### Contact



[www.abclonal.com](http://www.abclonal.com)

### Product Information

#### Source

Rabbit

#### Isotype

IgG

#### Purification

Affinity purification

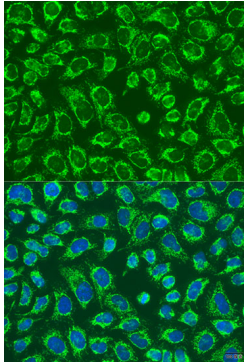
#### Storage

Store at -20°C. Avoid freeze / thaw cycles.

Buffer: PBS with 0.02% sodium azide,50% glycerol,pH7.3.

## Validation Data

---



Immunofluorescence analysis of U2OS cells using MAP4K5 antibody (A15139) at dilution of 1:100. Blue: DAPI for nuclear staining.