

A15138

Leader in Biomolecular Solutions for Life Science



CNTRL Rabbit pAb

Catalog No.: A15138

Basic Information

Observed MW

280kDa

Calculated MW

269kDa

Category

Mouse Monoclonal Antibody

Applications

WB, ELISA

Cross-Reactivity

Human, Mouse, Rat

Background

This gene encodes a centrosomal protein required for the centrosome to function as a microtubule organizing center. The gene product is also associated with centrosome maturation. One version of stem cell myeloproliferative disorder is the result of a reciprocal translocation between chromosomes 8 and 9, with the breakpoint associated with fibroblast growth factor receptor 1 and centrosomal protein 1.

Recommended Dilutions

WB 1:500 - 1:1000

Immunogen Information

Gene ID

11064

Swiss Prot

Q7Z7A1

Immunogen

Recombinant fusion protein containing a sequence corresponding to amino acids 250-500 of human CNTRL (NP_008949.4).

Synonyms

FAN; CEP1; CEP110; bA165P4.1; CNTRL

Contact



www.abclonal.com

Product Information

Source

Rabbit

Isotype

IgG

Purification

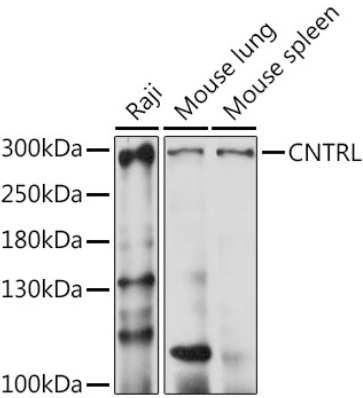
Affinity purification

Storage

Store at -20°C. Avoid freeze / thaw cycles.

Buffer: PBS with 0.01% thimerosal, 50% glycerol, pH 7.3.

Validation Data



Western blot analysis of various lysates using CNTRL Rabbit pAb (A15138) at 1:1000 dilution.
Secondary antibody: HRP Goat Anti-Rabbit IgG (H+L) (A5014) at 1:10000 dilution.
Lysates/proteins: 25µg per lane.
Blocking buffer: 3% nonfat dry milk in TBST.
Detection: ECL Basic Kit (RM00020).
Exposure time: 15s.