

A1511

Leader in Biomolecular Solutions for Life Science



## TIMP3 Rabbit pAb

Catalog No.: A1511

6 Publications

### Basic Information

#### Observed MW

25kDa

#### Calculated MW

24kDa

#### Category

Mouse Monoclonal Antibody

#### Applications

WB,IF/ICC,ELISA

#### Cross-Reactivity

Human,Rat

### Background

This gene belongs to the TIMP gene family. The proteins encoded by this gene family are inhibitors of the matrix metalloproteinases, a group of peptidases involved in degradation of the extracellular matrix (ECM). Expression of this gene is induced in response to mitogenic stimulation and this netrin domain-containing protein is localized to the ECM. Mutations in this gene have been associated with the autosomal dominant disorder Sorsby's fundus dystrophy.

### Recommended Dilutions

WB	1:100 - 1:500
IF/ICC	1:50 - 1:200

### Immunogen Information

#### Gene ID

7078

#### Swiss Prot

P35625

#### Immunogen

Recombinant fusion protein containing a sequence corresponding to amino acids 24-211 of human TIMP3 (NP\_000353.1).

#### Synonyms

SFD; K222; K222TA2; HSMRK222; TIMP3

### Contact



[www.abclonal.com](http://www.abclonal.com)

### Product Information

#### Source

Rabbit

#### Isotype

IgG

#### Purification

Affinity purification

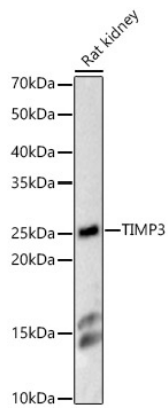
#### Storage

Store at -20°C. Avoid freeze / thaw cycles.

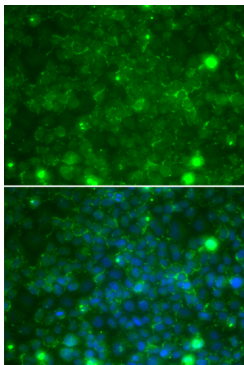
Buffer: PBS with 0.02% sodium azide,50% glycerol,pH7.3.

## Validation Data

---



Western blot analysis of Rat kidney, using TIMP3 antibody (A1511) at 1:400 dilution.  
Secondary antibody: HRP Goat Anti-Rabbit IgG (H+L) (A5014) at 1:10000 dilution.  
Lysates/proteins: 25µg per lane.  
Blocking buffer: 3% nonfat dry milk in TBST.  
Detection: ECL Basic Kit (RM00020).  
Exposure time: 60s.



Immunofluorescence analysis of MCF-7 cells using TIMP3 antibody (A1511). Blue: DAPI for nuclear staining.