

TGF beta 1 Rabbit pAb

Catalog No.: A15103 **22 Publications**

Basic Information

Observed MW

Refer to figures

Calculated MW

44kDa

Category

Primary antibody

Applications

ELISA, IF/ICC

Cross-Reactivity

Human, Mouse, Rat

Background

This gene encodes a secreted ligand of the TGF-beta (transforming growth factor-beta) superfamily of proteins. Ligands of this family bind various TGF-beta receptors leading to recruitment and activation of SMAD family transcription factors that regulate gene expression. The encoded preproprotein is proteolytically processed to generate a latency-associated peptide (LAP) and a mature peptide, and is found in either a latent form composed of a mature peptide homodimer, a LAP homodimer, and a latent TGF-beta binding protein, or in an active form consisting solely of the mature peptide homodimer. The mature peptide may also form heterodimers with other TGF-beta family members. This encoded protein regulates cell proliferation, differentiation and growth, and can modulate expression and activation of other growth factors including interferon gamma and tumor necrosis factor alpha. This gene is frequently upregulated in tumor cells, and mutations in this gene result in Camurati-Engelmann disease.

Recommended Dilutions

IF/ICC 1:50 - 1:200

Immunogen Information

Gene ID

7040

Swiss Prot

P01137

Immunogen

Recombinant fusion protein containing a sequence corresponding to amino acids 30-280 of human TGF beta 1 (NP_000651.3).

Synonyms

CED; LAP; DPD1; TGFB; IBDIMDE; TGFbeta; TGF-beta1; TGF beta 1

Contact

 | www.abclonal.com

Product Information

Source

Rabbit

Isotype

IgG

Purification

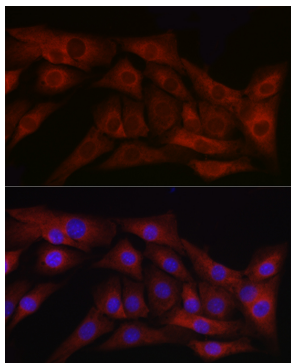
Affinity purification

Storage

Store at -20°C. Avoid freeze / thaw cycles.

Buffer: PBS with 0.01% thimerosal, 50% glycerol, pH 7.3.

Validation Data



Immunofluorescence analysis of NIH/3T3 cells using TGF beta 1 Rabbit pAb (A15103) at dilution of 1:100 (40x lens). Secondary antibody: Cy3 Goat Anti-Rabbit IgG (H+L) (AS007) at 1:500 dilution. Blue: DAPI for nuclear staining.