

A15042

Leader in Biomolecular Solutions for Life Science



LTB4R Rabbit pAb

Catalog No.: A15042

Basic Information

Observed MW

38kDa

Calculated MW

38kDa

Category

Polyclonal Antibody

Applications

WB, ELISA

Cross-Reactivity

Mouse, Rat

Background

Predicted to enable G protein-coupled peptide receptor activity and leukotriene B4 receptor activity. Predicted to be involved in inflammatory response and neuropeptide signaling pathway. Predicted to act upstream of or within signal transduction. Predicted to be located in plasma membrane. Predicted to be integral component of plasma membrane.

Recommended Dilutions

WB 1:500 - 1:1000

Immunogen Information

Gene ID

1241

Swiss Prot

Q15722

Immunogen

A synthetic peptide corresponding to a sequence within amino acids 253-352 of human LTB4R (NP_001137391.1).

Synonyms

BLT1; BLTR; P2Y7; GPR16; LTBR1; P2RY7; CMKRL1; LTB4R1; LTB4R

Contact



www.abclonal.com

Product Information

Source

Rabbit

Isotype

IgG

Purification

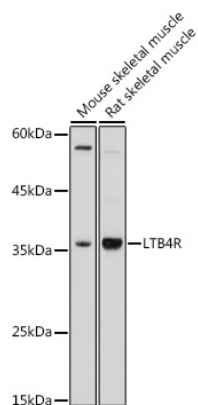
Affinity purification

Storage

Store at -20°C. Avoid freeze / thaw cycles.

Buffer: PBS with 0.01% thimerosal, 50% glycerol, pH 7.3.

Validation Data



Western blot analysis of various lysates using LTB4R Rabbit pAb (A15042) at 1:1000 dilution.
Secondary antibody: HRP Goat Anti-Rabbit IgG (H+L) (A5014) at 1:10000 dilution.
Lysates/proteins: 25µg per lane.
Blocking buffer: 3% nonfat dry milk in TBST.
Detection: ECL Basic Kit (RM00020).
Exposure time: 180s.