

A15004

Leader in Biomolecular Solutions for Life Science



## YTHDC2 Rabbit pAb

Catalog No.: A15004

5 Publications

### Basic Information

#### Observed MW

160kDa

#### Calculated MW

160kDa

#### Category

Polyclonal Antibody

#### Applications

WB, ELISA

#### Cross-Reactivity

Human, Mouse, Rat

### Background

This gene encodes a member of the DEAH (Asp-Glu-Ala-His) subfamily of proteins, part of the DEAD (Asp-Glu-Ala-Asp) box family of RNA helicases. The encoded protein binds to N6-methyladenosine, a common modified RNA nucleotide that is enriched in the stop codons and 3' UTRs of eukaryotic messenger RNAs. Binding of proteins to this modified nucleotide may regulate mRNA translation and stability. This gene may be associated with susceptibility to pancreatic cancer in human patients, and knockdown of this gene resulted in reduced proliferation in a human liver cancer cell line.

### Recommended Dilutions

WB 1:500 - 1:2000

### Immunogen Information

#### Gene ID

64848

#### Swiss Prot

Q9H6S0

#### Immunogen

Recombinant fusion protein containing a sequence corresponding to amino acids 1131-1430 of human YTHDC2 (NP\_073739.3).

#### Synonyms

CAHL; hYTHDC2; YTHDC2

### Contact



[www.abclonal.com](http://www.abclonal.com)

### Product Information

#### Source

Rabbit

#### Isotype

IgG

#### Purification

Affinity purification

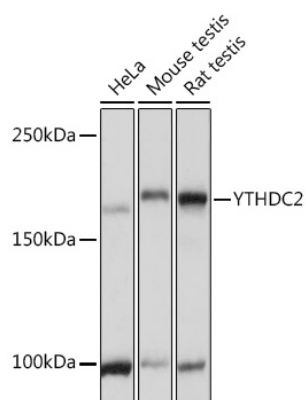
#### Storage

Store at -20°C. Avoid freeze / thaw cycles.

Buffer: PBS with 0.01% thimerosal, 50% glycerol, pH 7.3.

## Validation Data

---



Western blot analysis of various lysates using YTHDC2 Rabbit pAb (A15004) at 1:3000 dilution.  
Secondary antibody: HRP Goat Anti-Rabbit IgG (H+L) (A5014) at 1:10000 dilution.  
Lysates/proteins: 25µg per lane.  
Blocking buffer: 3% nonfat dry milk in TBST.  
Detection: ECL Basic Kit (RM00020).  
Exposure time: 1s.