

A14956

Leader in Biomolecular Solutions for Life Science



FCHO2 Rabbit pAb

Catalog No.: A14956

1 Publications

Basic Information

Observed MW

89kDa

Calculated MW

89kDa

Category

Polyclonal Antibody

Applications

WB, ELISA

Cross-Reactivity

Human, Mouse

Background

Enables identical protein binding activity. Involved in clathrin coat assembly and clathrin-dependent endocytosis. Located in clathrin-coated pit and clathrin-coated vesicle.

Recommended Dilutions

WB 1:500 - 1:2000

Immunogen Information

Gene ID

115548

Swiss Prot

Q0JRZ9

Immunogen

Recombinant fusion protein containing a sequence corresponding to amino acids 1-300 of human FCHO2 (NP_620137.2).

Synonyms

FCHO2

Contact



www.abclonal.com

Product Information

Source

Rabbit

Isotype

IgG

Purification

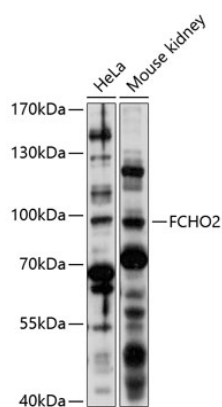
Affinity purification

Storage

Store at -20°C. Avoid freeze / thaw cycles.

Buffer: PBS with 0.01% thimerosal, 50% glycerol, pH 7.3.

Validation Data



Western blot analysis of various lysates using FCHO2 Rabbit pAb (A14956) at 1:1000 dilution.
Secondary antibody: HRP Goat Anti-Rabbit IgG (H+L) (AS014) at 1:10000 dilution.
Lysates/proteins: 25µg per lane.
Blocking buffer: 3% nonfat dry milk in TBST.
Detection: ECL Basic Kit (RM00020).
Exposure time: 10s.