

GPR173 Rabbit pAb

Catalog No.: A14897

Basic Information

Observed MW

53kDa

Calculated MW

41kDa

Category

Primary antibody

Applications

ELISA, WB

Cross-Reactivity

Human, Mouse

Background

This gene encodes a member of the G-protein coupled receptor 1 family. This protein contains 7 transmembrane domains and conserved cysteine residues.

Recommended Dilutions

WB 1:500 - 1:2000

Immunogen Information

Gene ID

54328

Swiss Prot

Q9NS66

Immunogen

Recombinant fusion protein containing a sequence corresponding to amino acids 160-230 of human GPR173 (NP_061842.1).

Synonyms

SREB3; GPR173

Contact

 | www.abclonal.com

Product Information

Source

Rabbit

Isotype

IgG

Purification

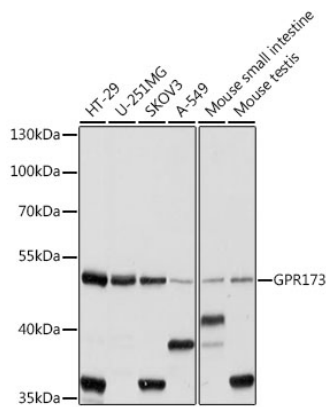
Affinity purification

Storage

Store at -20°C. Avoid freeze / thaw cycles.

Buffer: PBS with 0.01% thimerosal, 50% glycerol, pH7.3.

Validation Data



Western blot analysis of various lysates using GPR173 Rabbit pAb (A14897) at 1:1000 dilution.
Secondary antibody: HRP Goat Anti-Rabbit IgG (H+L) (AS014) at 1:10000 dilution.
Lysates/proteins: 25µg per lane.
Blocking buffer: 3% nonfat dry milk in TBST.
Detection: ECL Basic Kit (RM00020).
Exposure time: 10s.