

A14828

Leader in Biomolecular Solutions for Life Science



RALGPS1 Rabbit pAb

Catalog No.: A14828

Basic Information

Observed MW

62kDa

Calculated MW

62kDa

Category

Polyclonal Antibody

Applications

WB, ELISA

Cross-Reactivity

Human

Background

Enables guanyl-nucleotide exchange factor activity. Involved in regulation of Ral protein signal transduction. Predicted to be located in cytoplasm and plasma membrane.

Recommended Dilutions

WB 1:500 - 1:2000

Immunogen Information

Gene ID

9649

Swiss Prot

Q5JS13

Immunogen

Recombinant fusion protein containing a sequence corresponding to amino acids 1-300 of human RALGPS1 (NP_055451.1).

Synonyms

RALGEF2; RALGPS1A; RALGPS1

Contact



www.abclonal.com

Product Information

Source

Rabbit

Isotype

IgG

Purification

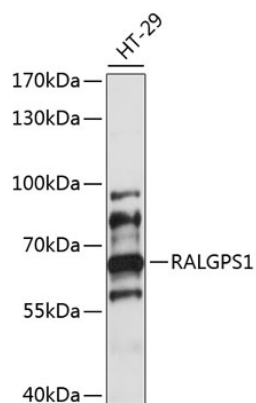
Affinity purification

Storage

Store at -20°C. Avoid freeze / thaw cycles.

Buffer: PBS with 0.01% thimerosal, 50% glycerol, pH 7.3.

Validation Data



Western blot analysis of lysates from HT-29 cells, using RALGPS1 Rabbit pAb (A14828) at 1:1000 dilution.
Secondary antibody: HRP Goat Anti-Rabbit IgG (H+L) (AS014) at 1:10000 dilution.
Lysates/proteins: 25µg per lane.
Blocking buffer: 3% nonfat dry milk in TBST.
Detection: ECL Basic Kit (RM00020).
Exposure time: 60s.