

A14818

Leader in Biomolecular Solutions for Life Science



SLC16A4 Rabbit pAb

Catalog No.: A14818

Basic Information

Observed MW

60kDa

Calculated MW

54kDa

Category

Mouse Monoclonal Antibody

Applications

WB, ELISA

Cross-Reactivity

Human, Rat

Background

Predicted to enable monocarboxylic acid transmembrane transporter activity. Predicted to be involved in monocarboxylic acid transport. Predicted to be located in membrane. Predicted to be integral component of plasma membrane.

Recommended Dilutions

WB 1:500 - 1:2000

Immunogen Information

Gene ID

9122

Swiss Prot

O15374

Immunogen

A synthetic peptide corresponding to a sequence within amino acids 388-487 of human SLC16A4 (NP_004687.1).

Synonyms

MCT4; MCT5; SLC16A4

Contact



www.abclonal.com

Product Information

Source

Rabbit

Isotype

IgG

Purification

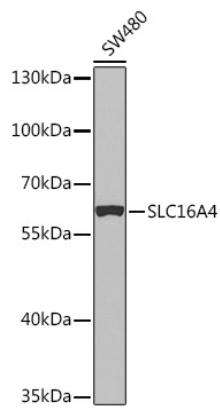
Affinity purification

Storage

Store at -20°C. Avoid freeze / thaw cycles.

Buffer: PBS with 0.02% sodium azide, 50% glycerol, pH 7.3.

Validation Data



Western blot analysis of extracts of SW480 cells, using SLC16A4 Rabbit pAb (A14818) at 1:1000 dilution.
Secondary antibody: HRP Goat Anti-Rabbit IgG (H+L) (AS014) at 1:10000 dilution.
Lysates/proteins: 25µg per lane.
Blocking buffer: 3% nonfat dry milk in TBST.
Detection: ECL Basic Kit (RM00020).
Exposure time: 90s.