

A1480

Leader in Biomolecular Solutions for Life Science



FSHR Rabbit pAb

Catalog No.: A1480

3 Publications

Basic Information

Observed MW

72kDa

Calculated MW

78kDa

Category

Mouse Monoclonal Antibody

Applications

WB,IF/ICC,ELISA

Cross-Reactivity

Human,Mouse,Rat

Background

The protein encoded by this gene belongs to family 1 of G-protein coupled receptors. It is the receptor for follicle stimulating hormone and functions in gonad development. Mutations in this gene cause ovarian dysgenesis type 1, and also ovarian hyperstimulation syndrome. Alternative splicing results in multiple transcript variants.

Recommended Dilutions

WB	1:500 - 1:1000
IF/ICC	1:50 - 1:200

Immunogen Information

Gene ID

2492

Swiss Prot

P23945

Immunogen

Recombinant fusion protein containing a sequence corresponding to amino acids 631-695 of human FSHR (NP_000136.2).

Synonyms

LGR1; ODG1; FSHR1; FSHRO; FSHR

Contact



www.abclonal.com

Product Information

Source

Rabbit

Isotype

IgG

Purification

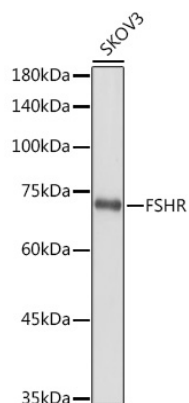
Affinity purification

Storage

Store at -20°C. Avoid freeze / thaw cycles.

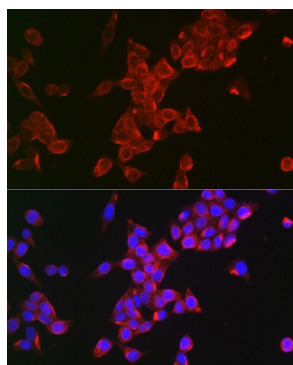
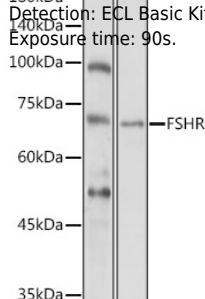
Buffer: PBS with 0.01% thimerosal, 50% glycerol, pH 7.3.

Validation Data

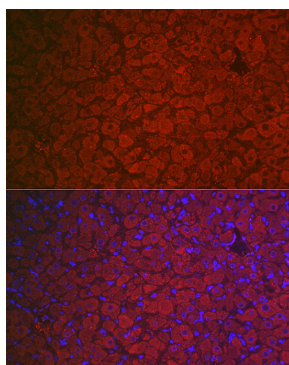


Western blot analysis of extracts of SKOV3 cells, using FSHR antibody (A1480) at 1:1000 dilution.
 Secondary antibody: HRP Goat Anti-Rabbit IgG (H+L) (AS014) at 1:10000 dilution.
 Lysates/proteins: 25µg per lane.
 Blocking buffer: 3% nonfat dry milk in TBST.
 Detection: ECL Basic Kit (RM00020).
 Exposure time: 30s.

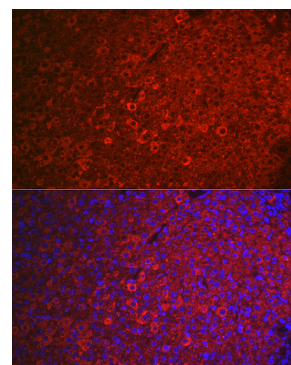
Western blot analysis of extracts of various cell lines, using FSHR antibody (A1480) at 1:1000 dilution.
 Secondary antibody: HRP Goat Anti-Rabbit IgG (H+L) (AS014) at 1:10000 dilution.
 Lysates/proteins: 25µg per lane.
 Blocking buffer: 3% nonfat dry milk in TBST.
 Detection: ECL Basic Kit (RM00020).
 Exposure time: 90s.



Immunofluorescence analysis of HeLa using FSHR Rabbit pAb (A1480) at dilution of 1:100 (40x lens). Blue: DAPI for nuclear staining.



Immunofluorescence analysis of rat ovary using FSHR Rabbit pAb (A1480) at dilution of 1:100 (40x lens). Blue: DAPI for nuclear staining.



Immunofluorescence analysis of mouse ovary using FSHR Rabbit pAb (A1480) at dilution of 1:100 (40x lens). Blue: DAPI for nuclear staining.