

A14692

Leader in Biomolecular Solutions for Life Science



## KDM7A Rabbit pAb

Catalog No.: A14692

3 Publications

### Basic Information

#### Observed MW

106kDa

#### Calculated MW

106kDa

#### Category

Polyclonal Antibody

#### Applications

WB, ELISA

#### Cross-Reactivity

Human

### Background

Enables histone H3-methyl-lysine-9 demethylase activity and histone H3-tri/di-methyl-lysine-27 demethylase activity. Involved in histone H3-K27 demethylation; histone H3-K9 demethylation; and positive regulation of transcription, DNA-templated. Predicted to be located in nucleolus and nucleoplasm. Human ortholog(s) of this gene implicated in melanoma. Orthologous to human KDM7A (lysine demethylase 7A).

### Recommended Dilutions

WB 1:500 - 1:1000

### Immunogen Information

#### Gene ID

338523

#### Swiss Prot

Q3UWM4

#### Immunogen

Recombinant fusion protein containing a sequence corresponding to amino acids 100-200 of mouse KDM7A (NP\_001028602.2).

#### Synonyms

Jhdm1d; mKIAA1718; A630082K20Rik; KDM7A

### Contact



[www.abclonal.com](http://www.abclonal.com)

### Product Information

#### Source

Rabbit

#### Isotype

IgG

#### Purification

Affinity purification

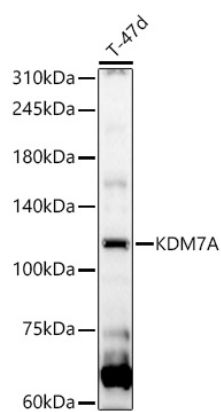
#### Storage

Store at -20°C. Avoid freeze / thaw cycles.

Buffer: PBS with 0.02% sodium azide, 50% glycerol, pH 7.3.

## Validation Data

---



Western blot analysis of T-47d, using KDM7A Rabbit pAb (A14692) at 1:1000 dilution.  
Secondary antibody: HRP Goat Anti-Rabbit IgG (H+L) (A5014) at 1:10000 dilution.  
Lysates/proteins: 25µg per lane.  
Blocking buffer: 3% nonfat dry milk in TBST.  
Detection: ECL Basic Kit (RM00020).  
Exposure time: 30s.