

A14688

Leader in Biomolecular Solutions for Life Science



GOLGA1 Rabbit pAb

Catalog No.: A14688

1 Publications

Basic Information

Observed MW

105kDa

Calculated MW

88kDa

Category

Mouse Monoclonal Antibody

Applications

WB,IF/ICC,ELISA

Cross-Reactivity

Human,Mouse,Rat

Background

The Golgi apparatus, which participates in glycosylation and transport of proteins and lipids in the secretory pathway, consists of a series of stacked cisternae (flattened membrane sacs). Interactions between the Golgi and microtubules are thought to be important for the reorganization of the Golgi after it fragments during mitosis. This gene encodes one of the golgins, a family of proteins localized to the Golgi. This encoded protein is associated with Sjogren's syndrome.

Recommended Dilutions

WB	1:500 - 1:2000
IF/ICC	1:50 - 1:200

Immunogen Information

Gene ID

2800

Swiss Prot

Q92805

Immunogen

Recombinant fusion protein containing a sequence corresponding to amino acids 1-300 of human GOLGA1 (NP_002068.1).

Synonyms

golgin-97; GOLGA1

Contact



www.abclonal.com

Product Information

Source

Rabbit

Isotype

IgG

Purification

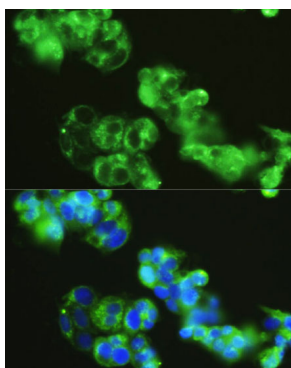
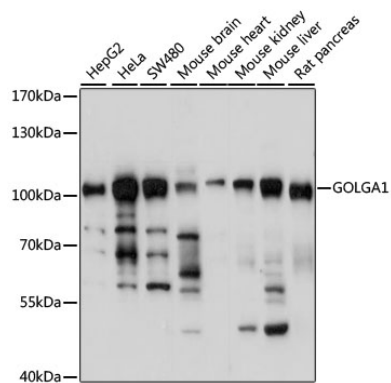
Affinity purification

Storage

Store at -20°C. Avoid freeze / thaw cycles.

Buffer: PBS with 0.01% thimerosal, 50% glycerol, pH7.3.

Validation Data



Immunofluorescence analysis of HepG2 cells using GOLGA1 Rabbit pAb (A14688) at dilution of 1:150. Secondary antibody: Cy3 Goat Anti-Rabbit IgG (H+L) (AS007) at 1:500 dilution. Blue: DAPI for nuclear staining.