

A14677

Leader in Biomolecular Solutions for Life Science



## PPP1R14B Rabbit pAb

Catalog No.: A14677

1 Publications

### Basic Information

#### Observed MW

16kDa

#### Calculated MW

16kDa

#### Category

Polyclonal Antibody

#### Applications

WB, ELISA

#### Cross-Reactivity

Human, Mouse, Rat

### Background

Predicted to enable protein serine/threonine phosphatase inhibitor activity. Predicted to be involved in innate immune response. Predicted to be located in cytoplasm.

### Recommended Dilutions

WB 1:500 - 1:2000

### Immunogen Information

#### Gene ID

26472

#### Swiss Prot

Q96C90

#### Immunogen

Recombinant fusion protein containing a sequence corresponding to amino acids 68-147 of human PPP1R14B (NP\_619634.1).

#### Synonyms

PNG; PHI-1; PLCB3N; SOM172; PPP1R14B

### Contact



[www.abclonal.com](http://www.abclonal.com)

### Product Information

#### Source

Rabbit

#### Isotype

IgG

#### Purification

Affinity purification

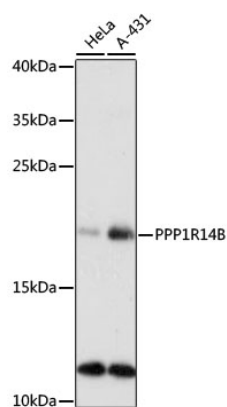
#### Storage

Store at -20°C. Avoid freeze / thaw cycles.

Buffer: PBS with 0.01% thimerosal, 50% glycerol, pH 7.3.

## Validation Data

---



Western blot analysis of various lysates using PPP1R14B Rabbit pAb (A14677) at 1:1000 dilution.  
Secondary antibody: HRP Goat Anti-Rabbit IgG (H+L) (AS014) at 1:10000 dilution.  
Lysates/proteins: 25µg per lane.  
Blocking buffer: 3% nonfat dry milk in TBST.  
Detection: ECL Basic Kit (RM00020).  
Exposure time: 90s.