

A14658

Leader in Biomolecular Solutions for Life Science



S100A10 Rabbit pAb

Catalog No.: A14658

Basic Information

Observed MW

11kDa

Calculated MW

11kDa

Category

Polyclonal Antibody

Applications

WB, IHC-P, IF/ICC, ELISA

Cross-Reactivity

Human, Mouse, Rat

Background

The protein encoded by this gene is a member of the S100 family of proteins containing 2 EF-hand calcium-binding motifs. S100 proteins are localized in the cytoplasm and/or nucleus of a wide range of cells, and involved in the regulation of a number of cellular processes such as cell cycle progression and differentiation. S100 genes include at least 13 members which are located as a cluster on chromosome 1q21. This protein may function in exocytosis and endocytosis.

Recommended Dilutions

WB	1:500 - 1:1000
IHC-P	1:50 - 1:200
IF/ICC	1:50 - 1:200

Immunogen Information

Gene ID

6281

Swiss Prot

P60903

Immunogen

Recombinant fusion protein containing a sequence corresponding to amino acids 1-97 of human S100A10 (NP_002957.1).

Synonyms

42C; P11; p10; GP11; ANX2L; CAL1L; CLP11; Ca[1]; ANX2LG; S100A10

Contact



www.abclonal.com

Product Information

Source

Rabbit

Isotype

IgG

Purification

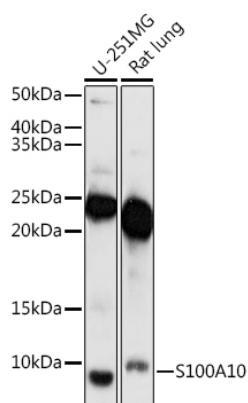
Affinity purification

Storage

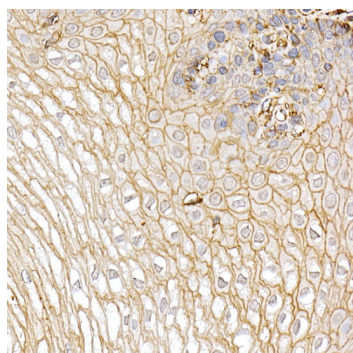
Store at -20°C. Avoid freeze / thaw cycles.

Buffer: PBS with 0.05% proclin300, 50% glycerol, pH7.3.

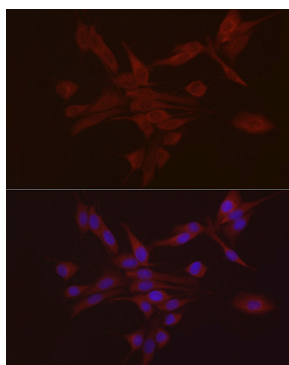
Validation Data



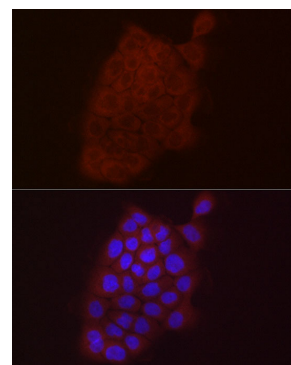
Western blot analysis of extracts of various cell lines, using S100A10 antibody (A14658) at 1:1000 dilution.
 Secondary antibody: HRP Goat Anti-Rabbit IgG (H+L) (AS014) at 1:10000 dilution.
 Lysates/proteins: 25µg per lane.
 Blocking buffer: 3% nonfat dry milk in TBST.
 Detection: ECL Enhanced Kit (RM00021).
 Exposure time: 180s.



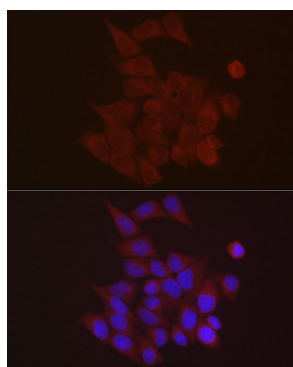
Immunohistochemistry analysis of paraffin-embedded Human esophagus using S100A10 antibody (A14658) at dilution of 1:20 (40x lens). Perform high pressure antigen retrieval with 10 mM citrate buffer pH 6.0 before commencing with IHC staining protocol.



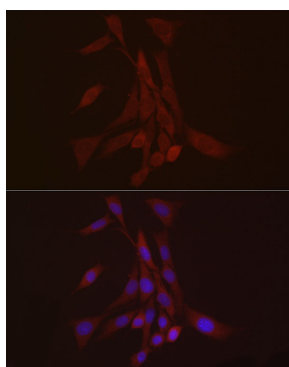
Immunofluorescence analysis of PC-12 using S100A10 antibody (A14658) at dilution of 1:20 (40x lens). Blue: DAPI for nuclear staining.



Immunofluorescence analysis of A-431 using S100A10 antibody (A14658) at dilution of 1:20 (40x lens). Blue: DAPI for nuclear staining.



Immunofluorescence analysis of HeLa using S100A10 antibody (A14658) at dilution of 1:20 (40x lens). Blue: DAPI for nuclear staining.



Immunofluorescence analysis of NIH/3T3 using S100A10 antibody (A14658) at dilution of 1:20 (40x lens). Blue: DAPI for nuclear staining.