

A14606

Leader in Biomolecular Solutions for Life Science



## SLC2A9 Rabbit pAb

Catalog No.: A14606

1 Publications

### Basic Information

#### Observed MW

56-60kDa

#### Calculated MW

59kDa

#### Category

Mouse Monoclonal Antibody

#### Applications

WB, ELISA

#### Cross-Reactivity

Mouse, Rat

### Background

This gene encodes a member of the SLC2A facilitative glucose transporter family. Members of this family play a significant role in maintaining glucose homeostasis. The encoded protein may play a role in the development and survival of chondrocytes in cartilage matrices. Two transcript variants encoding distinct isoforms have been identified for this gene.

### Recommended Dilutions

WB 1:1000 - 1:5000

### Immunogen Information

#### Gene ID

56606

#### Swiss Prot

Q9NRM0

#### Immunogen

A synthetic peptide corresponding to a sequence within amino acids 429-529 of human SLC2A9 (NP\_064425.2).

#### Synonyms

GLUT9; GLUTX; UAQLT2; URATv1; SLC2A9

### Contact



[www.abclonal.com](http://www.abclonal.com)

### Product Information

#### Source

Rabbit

#### Isotype

IgG

#### Purification

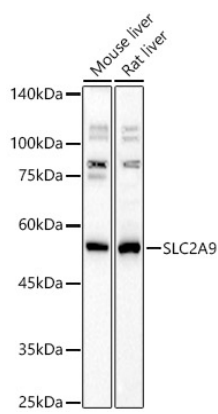
Affinity purification

#### Storage

Store at -20°C. Avoid freeze / thaw cycles.

Buffer: PBS with 0.01% thimerosal, 50% glycerol, pH 7.3.

# Validation Data



Western blot analysis of various lysates, using SLC2A9 Rabbit pAb (A14606) at 1:2000 dilution.  
Secondary antibody: HRP Goat Anti-Rabbit IgG (H+L) (AS014) at 1:10000 dilution.  
Lysates/proteins: 25µg per lane.  
Blocking buffer: 3% nonfat dry milk in TBST.  
Detection: ECL Basic Kit (RM00020).  
Exposure time: 30s.