

A14570

Leader in Biomolecular Solutions for Life Science



## [KO Validated] CRMP2/DPYSL2 Rabbit pAb

Catalog No.: A14570 **KO** Validated

### Basic Information

#### Observed MW

62kDa

#### Calculated MW

62kDa

#### Category

Polyclonal Antibody

#### Applications

WB, IHC-P, ELISA

#### Cross-Reactivity

Human, Mouse, Rat

### Background

This gene encodes a member of the collapsin response mediator protein family. Collapsin response mediator proteins form homo- and hetero-tetramers and facilitate neuron guidance, growth and polarity. The encoded protein promotes microtubule assembly and is required for Sema3A-mediated growth cone collapse, and also plays a role in synaptic signaling through interactions with calcium channels. This gene has been implicated in multiple neurological disorders, and hyperphosphorylation of the encoded protein may play a key role in the development of Alzheimer's disease. Alternatively spliced transcript variants encoding multiple isoforms have been observed for this gene.

### Recommended Dilutions

WB	1:500 - 1:2000
IHC-P	1:100 - 1:500

### Immunogen Information

Gene ID	Swiss Prot
1808	Q16555

#### Immunogen

A synthetic peptide corresponding to a sequence within amino acids 400-500 of human CRMP2/CRMP2/DPYSL2 (NP\_001377.1).

#### Synonyms

DRP2; N2A3; CRMP2; DRP-2; ULIP2; CRMP-2; DHPRP2; ULIP-2; L2

### Contact



[www.abclonal.com](http://www.abclonal.com)

### Product Information

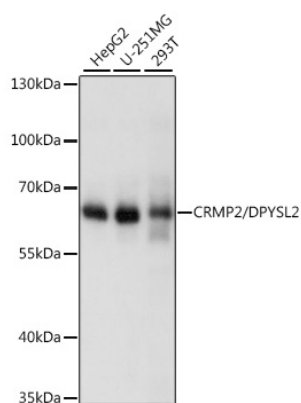
Source	Isotype	Purification
Rabbit	IgG	Affinity purification

#### Storage

Store at -20°C. Avoid freeze / thaw cycles.

Buffer: PBS with 0.01% thimerosal, 50% glycerol, pH7.3.

## Validation Data



Western blot analysis of various lysates using [KO Validated] CRMP2/DPYSL2 Rabbit pAb (A14570) at 1:1000 dilution.  
 Secondary antibody: HRP Goat Anti-Rabbit IgG (H+L) (AS014) at 1:10000 dilution.  
 Lysates/proteins: 25µg per lane.  
 Blocking buffer: 3% nonfat dry milk in TBST.  
 Detection: ECL Basic Kit (RM00020).  
 Exposure time: 10s.

Western blot analysis of lysates from wild type (WT) and CRMP2/CRMP2/DPYSL2 knockout (KO) HeLa cells, using [KO Validated] CRMP2/DPYSL2 Rabbit pAb (A14570) at 1:3000 dilution.

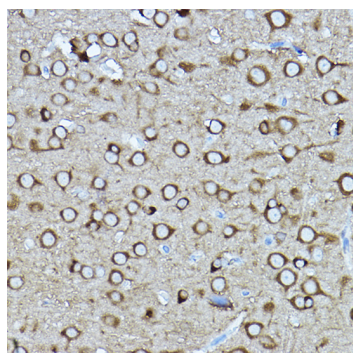
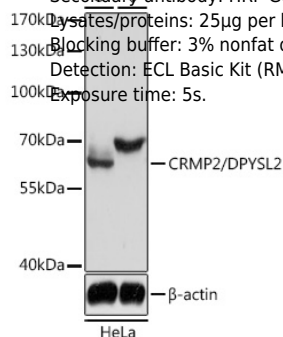
Secondary antibody: HRP Goat Anti-Rabbit IgG (H+L) (AS014) at 1:10000 dilution.

Lysates/proteins: 25µg per lane.

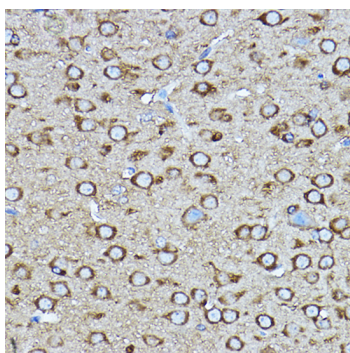
Blocking buffer: 3% nonfat dry milk in TBST.

Detection: ECL Basic Kit (RM00020).

Exposure time: 5s.



Immunohistochemistry analysis of CRMP2/DPYSL2 in paraffin-embedded rat brain using [KO Validated] CRMP2/CRMP2/DPYSL2 Rabbit pAb (A14570) at dilution of 1:400 (40x lens). Perform high pressure antigen retrieval with 10 mM citrate buffer pH 6.0 before commencing with IHC staining protocol.



Immunohistochemistry analysis of CRMP2/DPYSL2 in paraffin-embedded mouse brain using [KO Validated] CRMP2/CRMP2/DPYSL2 Rabbit pAb (A14570) at dilution of 1:400 (40x lens). Perform high pressure antigen retrieval with 10 mM citrate buffer pH 6.0 before commencing with IHC staining protocol.