

A14559

Leader in Biomolecular Solutions for Life Science



## SLC47A1 Rabbit pAb

Catalog No.: A14559

2 Publications

### Basic Information

**Observed MW**

62kDa

**Calculated MW**

62kDa

**Category**

Polyclonal Antibody

**Applications**

WB, ELISA

**Cross-Reactivity**

Human, Rat

### Background

This gene is located within the Smith-Magenis syndrome region on chromosome 17. It encodes a protein of unknown function.

### Recommended Dilutions

WB 1:500 - 1:1000

### Immunogen Information

**Gene ID**

55244

**Swiss Prot**

Q96FL8

**Immunogen**

Recombinant fusion protein containing a sequence corresponding to amino acids 460-550 of human SLC47A1 (NP\_060712.2).

**Synonyms**

MATE1; SLC47A1

### Contact



[www.abclonal.com](http://www.abclonal.com)

### Product Information

**Source**

Rabbit

**Isotype**

IgG

**Purification**

Affinity purification

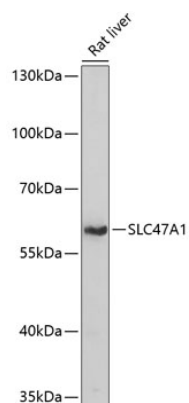
**Storage**

Store at -20°C. Avoid freeze / thaw cycles.

Buffer: PBS with 0.01% thimerosal, 50% glycerol, pH7.3.

## Validation Data

---



Western blot analysis of lysates from rat liver, using SLC47A1 Rabbit pAb (A14559) at 1:1000 dilution.  
Secondary antibody: HRP Goat Anti-Rabbit IgG (H+L) (AS014) at 1:10000 dilution.  
Lysates/proteins: 25µg per lane.  
Blocking buffer: 3% nonfat dry milk in TBST.  
Detection: ECL Basic Kit (RM00020).  
Exposure time: 30s.