

A14548

Leader in Biomolecular Solutions for Life Science



# TOMM22 Rabbit pAb

Catalog No.: A14548

## Basic Information

### Observed MW

16kDa

### Calculated MW

16kDa

### Category

Polyclonal Antibody

### Applications

WB, ELISA

### Cross-Reactivity

Human

## Background

The protein encoded by this gene is an integral membrane protein of the mitochondrial outer membrane. The encoded protein interacts with TOMM20 and TOMM40, and forms a complex with several other proteins to import cytosolic preproteins into the mitochondrion.

## Recommended Dilutions

WB 1:500 - 1:2000

## Immunogen Information

### Gene ID

56993

### Swiss Prot

Q9NS69

### Immunogen

Recombinant fusion protein containing a sequence corresponding to amino acids 1-83 of human TOMM22 (NP\_064628.1).

### Synonyms

1C9-2; TOM22; MST065; MSTP065; TOMM22

## Contact



[www.abclonal.com](http://www.abclonal.com)

## Product Information

### Source

Rabbit

### Isotype

IgG

### Purification

Affinity purification

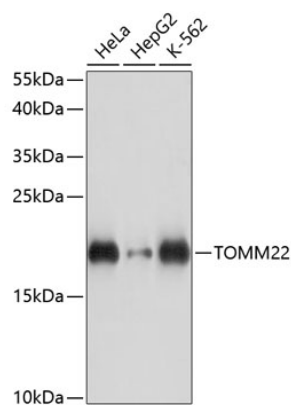
### Storage

Store at -20°C. Avoid freeze / thaw cycles.

Buffer: PBS with 0.01% thimerosal, 50% glycerol, pH 7.3.

## Validation Data

---



Western blot analysis of various lysates using TOMM22 Rabbit pAb (A14548) at 1:3000 dilution.  
Secondary antibody: HRP Goat Anti-Rabbit IgG (H+L) (AS014) at 1:10000 dilution.  
Lysates/proteins: 25µg per lane.  
Blocking buffer: 3% nonfat dry milk in TBST.  
Detection: ECL Basic Kit (RM00020).  
Exposure time: 10s.