

A1453

Leader in Biomolecular Solutions for Life Science



## Fibrinogen alpha chain (FGA) Rabbit pAb

Catalog No.: A1453

1 Publications

### Basic Information

#### Observed MW

95kDa/60-70kDa

#### Calculated MW

95kDa

#### Category

Polyclonal Antibody

#### Applications

WB,IHC-P,ELISA

#### Cross-Reactivity

Human,Mouse,Rat

### Background

This gene encodes the alpha subunit of the coagulation factor fibrinogen, which is a component of the blood clot. Following vascular injury, the encoded preproprotein is proteolytically processed by thrombin during the conversion of fibrinogen to fibrin. Mutations in this gene lead to several disorders, including dysfibrinogenemia, hypofibrinogenemia, afibrinogenemia and renal amyloidosis. Alternative splicing results in multiple transcript variants, at least one of which encodes an isoform that undergoes proteolytic processing.

### Recommended Dilutions

WB	1:500 - 1:1000
IHC-P	1:50 - 1:200

### Immunogen Information

#### Gene ID

2243

#### Swiss Prot

P02671

#### Immunogen

Recombinant fusion protein containing a sequence corresponding to amino acids 410-559 of human Fibrinogen alpha chain (FGA) (NP\_000499.1).

#### Synonyms

Fib2; Fibrinogen alpha chain (FGA)

### Contact



[www.abclonal.com](http://www.abclonal.com)

### Product Information

#### Source

Rabbit

#### Isotype

IgG

#### Purification

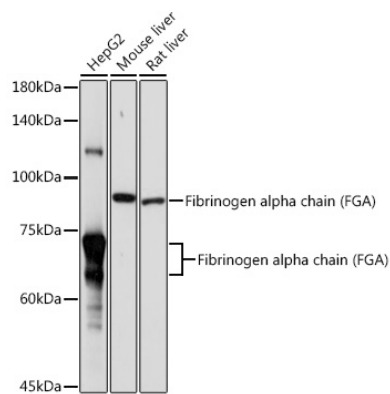
Affinity purification

#### Storage

Store at -20°C. Avoid freeze / thaw cycles.

Buffer: PBS with 0.01% thimerosal, 50% glycerol, pH7.3.

## Validation Data



Western blot analysis of various lysates using Fibrinogen alpha chain (FGA) Rabbit pAb (A1453) at 1:1000 dilution.

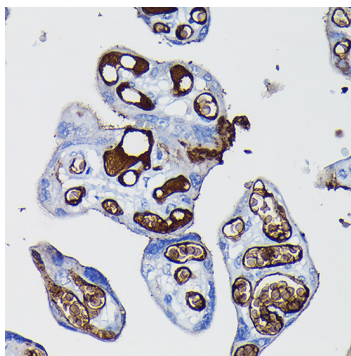
Secondary antibody: HRP Goat Anti-Rabbit IgG (H+L) (AS014) at 1:10000 dilution.

Lysates/proteins: 25µg per lane.

Blocking buffer: 3% nonfat dry milk in TBST.

Detection: ECL Basic Kit (RM00020).

Exposure time: 1s.



Immunohistochemistry analysis of Fibrinogen alpha chain (FGA) in paraffin-embedded human placenta using Fibrinogen alpha chain (Fibrinogen alpha chain (FGA)) Rabbit pAb (A1453) at dilution of 1:100 (40x lens). Perform high pressure antigen retrieval with 10 mM citrate buffer pH 6.0 before commencing with IHC staining protocol.