

A14490

Leader in Biomolecular Solutions for Life Science



XCL1 Rabbit pAb

Catalog No.: A14490

Basic Information

Observed MW

13kDa

Calculated MW

13kDa

Category

Polyclonal Antibody

Applications

WB, ELISA

Cross-Reactivity

Rat

Background

This antimicrobial gene encodes a member of the chemokine superfamily. Chemokines function in inflammatory and immunological responses, inducing leukocyte migration and activation. The encoded protein is a member of the C-chemokine subfamily, retaining only two of four cysteines conserved in other chemokines, and is thought to be specifically chemotactic for T cells. This gene and a closely related family member are located on the long arm of chromosome 1.

Recommended Dilutions

WB 1:500 - 1:2000

Immunogen Information

Gene ID

6375

Swiss Prot

P47992

Immunogen

A synthetic peptide corresponding to a sequence within amino acids 1-100 of human XCL1 (NP_002986.1).

Synonyms

LTN; ATAC; LPTN; SCM1; SCM-1; SCM1A; SCYC1; SCM-1a; XCL1

Contact



www.abclonal.com

Product Information

Source

Rabbit

Isotype

IgG

Purification

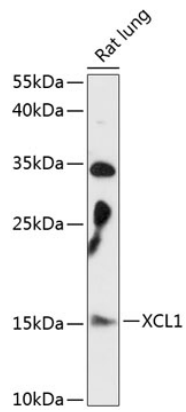
Affinity purification

Storage

Store at -20°C. Avoid freeze / thaw cycles.

Buffer: PBS with 0.01% thimerosal, 50% glycerol, pH 7.3.

Validation Data



Western blot analysis of lysates from rat lung, using XCL1 Rabbit pAb (A14490) at 1:3000 dilution.
Secondary antibody: HRP Goat Anti-Rabbit IgG (H+L) (AS014) at 1:10000 dilution.
Lysates/proteins: 25µg per lane.
Blocking buffer: 3% nonfat dry milk in TBST.
Detection: ECL Basic Kit (RM00020).
Exposure time: 90s.