

A1447

Leader in Biomolecular Solutions for Life Science



CNR1 Rabbit pAb

Catalog No.: A1447

2 Publications

Basic Information

Observed MW

60kDa

Calculated MW

53kDa

Category

Polyclonal Antibody

Applications

WB, IHC-P, ELISA

Cross-Reactivity

Human, Mouse, Rat

Background

This gene encodes one of two cannabinoid receptors. The cannabinoids, principally delta-9-tetrahydrocannabinol and synthetic analogs, are psychoactive ingredients of marijuana. The cannabinoid receptors are members of the guanine-nucleotide-binding protein (G-protein) coupled receptor family, which inhibit adenylate cyclase activity in a dose-dependent, stereoselective and pertussis toxin-sensitive manner. The two receptors have been found to be involved in the cannabinoid-induced CNS effects (including alterations in mood and cognition) experienced by users of marijuana. Multiple transcript variants encoding two different protein isoforms have been described for this gene.

Recommended Dilutions

WB	1:500 - 1:1000
IHC-P	1:50 - 1:200

Immunogen Information

Gene ID

1268

Swiss Prot

P21554

Immunogen

Recombinant fusion protein containing a sequence corresponding to amino acids 401-472 of human CNR1 (NP_001153698.1).

Synonyms

CB1; CNR; CB-R; CB1A; CB1R; CANN6; CB1K5; CNR1

Contact



www.abclonal.com

Product Information

Source

Rabbit

Isotype

IgG

Purification

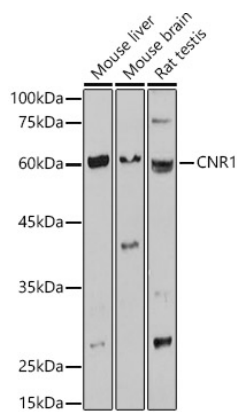
Affinity purification

Storage

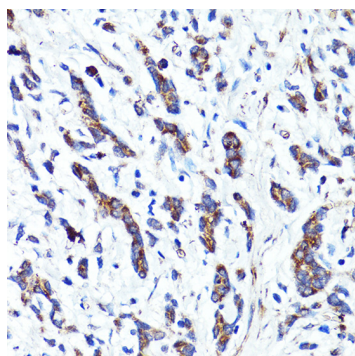
Store at -20°C. Avoid freeze / thaw cycles.

Buffer: PBS with 0.05% proclin300, 50% glycerol, pH7.3.

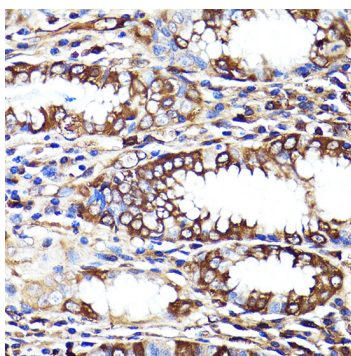
Validation Data



Western blot analysis of extracts of various cell lines, using CNR1 antibody (A1447) at 1:1000 dilution.
Secondary antibody: HRP Goat Anti-Rabbit IgG (H+L) (AS014) at 1:10000 dilution.
Lysates/proteins: 25µg per lane.
Blocking buffer: 3% nonfat dry milk in TBST.
Detection: ECL Basic Kit (RM00020).
Exposure time: 3s.



Immunohistochemistry analysis of paraffin-embedded Human gastric cancer using CNR1 antibody (A1447) at dilution of 1:100 (40x lens). Perform microwave antigen retrieval with 10 mM PBS buffer pH 7.2 before commencing with IHC staining protocol.



Immunohistochemistry analysis of paraffin-embedded Human stomach using CNR1 antibody (A1447) at dilution of 1:100 (40x lens). Perform microwave antigen retrieval with 10 mM PBS buffer pH 7.2 before commencing with IHC staining protocol.