

A14305

Leader in Biomolecular Solutions for Life Science



## ILKAP Rabbit pAb

Catalog No.: A14305

### Basic Information

**Observed MW**

42kDa

**Calculated MW**

43kDa

**Category**

Polyclonal Antibody

**Applications**

WB, ELISA

**Cross-Reactivity**

Human, Mouse

### Background

The protein encoded by this gene is a protein serine/threonine phosphatase of the PP2C family. This protein can interact with integrin-linked kinase (ILK/ILK1), a regulator of integrin mediated signaling, and regulate the kinase activity of ILK. Through the interaction with ILK, this protein may selectively affect the signaling process of ILK-mediated glycogen synthase kinase 3 beta (GSK3beta), and thus participate in Wnt signaling pathway.

### Recommended Dilutions

WB 1:500 - 1:2000

### Immunogen Information

**Gene ID**

80895

**Swiss Prot**

Q9H0C8

**Immunogen**

Recombinant fusion protein containing a sequence corresponding to amino acids 1-392 of human ILKAP (NP\_110395.1).

**Synonyms**

PP2CD; PPM1O; ILKAP2; ILKAP3; PP2C-DELTA; ILKAP

### Contact



[www.abclonal.com](http://www.abclonal.com)

### Product Information

**Source**

Rabbit

**Isotype**

IgG

**Purification**

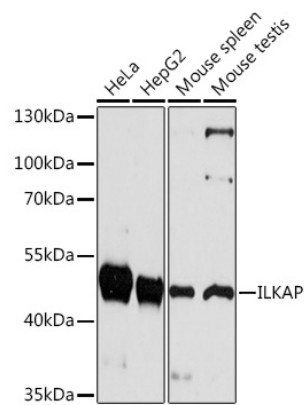
Affinity purification

**Storage**

Store at -20°C. Avoid freeze / thaw cycles.

Buffer: PBS with 0.01% thimerosal, 50% glycerol, pH7.3.

Validation Data



Western blot analysis of various lysates using ILKAP Rabbit pAb (A14305) at 1:1000 dilution.  
Secondary antibody: HRP Goat Anti-Rabbit IgG (H+L) (AS014) at 1:10000 dilution.  
Lysates/proteins: 25µg per lane.  
Blocking buffer: 3% nonfat dry milk in TBST.  
Detection: ECL Basic Kit (RM00020).  
Exposure time: 30s.