

A14295

Leader in Biomolecular Solutions for Life Science



# MYLK2 Rabbit pAb

Catalog No.: A14295

## Basic Information

### Observed MW

65kDa

### Calculated MW

65kDa

### Category

Polyclonal Antibody

### Applications

WB, ELISA

### Cross-Reactivity

Human, Mouse

## Background

This gene encodes a myosin light chain kinase, a calcium/calmodulin dependent enzyme, that is exclusively expressed in adult skeletal muscle.

## Recommended Dilutions

WB 1:500 - 1:2000

## Immunogen Information

### Gene ID

85366

### Swiss Prot

Q9H1R3

### Immunogen

Recombinant fusion protein containing a sequence corresponding to amino acids 1-90 of human MYLK2 (NP\_149109.1).

### Synonyms

KMLC; MLCK; MLCK2; skMLCK; MYLK2

## Contact



[www.abclonal.com](http://www.abclonal.com)

## Product Information

### Source

Rabbit

### Isotype

IgG

### Purification

Affinity purification

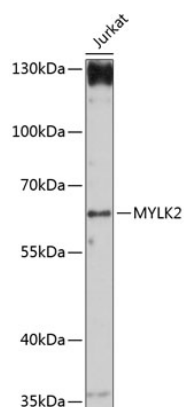
### Storage

Store at -20°C. Avoid freeze / thaw cycles.

Buffer: PBS with 0.01% thimerosal, 50% glycerol, pH7.3.

## Validation Data

---



Western blot analysis of lysates from Jurkat cells, using MYLK2 Rabbit pAb (A14295) at 1:1000 dilution.  
Secondary antibody: HRP Goat Anti-Rabbit IgG (H+L) (A5014) at 1:10000 dilution.  
Lysates/proteins: 25µg per lane.  
Blocking buffer: 3% nonfat dry milk in TBST.  
Detection: ECL Basic Kit (RM00020).  
Exposure time: 30s.