

A14248

Leader in Biomolecular Solutions for Life Science



LSAMP Rabbit pAb

Catalog No.: A14248

Basic Information

Observed MW

37kDa

Calculated MW

37kDa

Category

Polyclonal Antibody

Applications

WB, ELISA

Cross-Reactivity

Human, Mouse, Rat

Background

This gene encodes a member of the immunoglobulin LAMP, OBCAM and neurotrimin (IgLON) family of proteins. The encoded preproprotein is proteolytically processed to generate a neuronal surface glycoprotein. This protein may act as a selective homophilic adhesion molecule during axon guidance and neuronal growth in the developing limbic system. The encoded protein may also function as a tumor suppressor and may play a role in neuropsychiatric disorders. Alternative splicing results in multiple transcript variants, at least one of which encodes a preproprotein that is proteolytically processed.

Recommended Dilutions

WB 1:500 - 1:1000

Immunogen Information

Gene ID

4045

Swiss Prot

Q13449

Immunogen

Recombinant fusion protein containing a sequence corresponding to amino acids 219-315 of human LSAMP (NP_002329.2).

Synonyms

LAMP; IGLON3; LSAMP

Contact



www.abclonal.com

Product Information

Source

Rabbit

Isotype

IgG

Purification

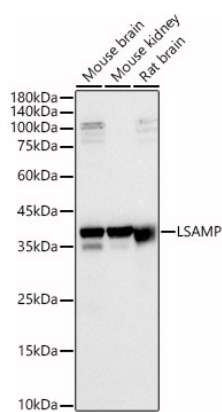
Affinity purification

Storage

Store at -20°C. Avoid freeze / thaw cycles.

Buffer: PBS with 0.01% thimerosal, 50% glycerol, pH7.3.

Validation Data



Western blot analysis of various lysates, using LSAMP antibody (A14248) at 1:1000 dilution.
Secondary antibody: HRP Goat Anti-Rabbit IgG (H+L) (AS014) at 1:10000 dilution.
Lysates/proteins: 25µg per lane.
Blocking buffer: 3% nonfat dry milk in TBST.
Detection: ECL Basic Kit (RM00020).
Exposure time: 30s.